

Recombinant Human PRCP Protein (His Tag)

Catalog Number:PKSH032721



Note: Centrifuge before opening to ensure complete recovery of vial contents.

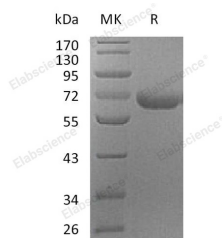
Description

| | |
|------------------------------------|--|
| Synonyms | Lysosomal Pro-X Carboxypeptidase;Angiotensinase C;Lysosomal Carboxypeptidase C;Proline Carboxypeptidase;Prolylcarboxypeptidase;PRCP;PRCP;PCP |
| Species | Human |
| Expression Host | HEK293 Cells |
| Sequence | Leu22-His496 |
| Accession | P42785 |
| Calculated Molecular Weight | 54.5 kDa |
| Observed molecular weight | 60-90 kDa |
| Tag | C-His |

Properties

| | |
|-----------------------|--|
| Purity | > 95 % as determined by reducing SDS-PAGE. |
| Endotoxin | < 1.0 EU per µg of the protein as determined by the LAL method. |
| Storage | Store at < -20°C, stable for 6 months. Please minimize freeze-thaw cycles. |
| Shipping | This product is provided as liquid. It is shipped at frozen temperature with blue ice/gel packs. Upon receipt, store it immediately at < - 20°C. |
| Formulation | Supplied as a 0.2 µm filtered solution of 20mM NaAc-HAc, 150mM NaCl, 10% Glycerol, pH4.5. |
| Reconstitution | Not Applicable |

Data



> 95 % as determined by reducing SDS-PAGE.

Background

Lysosomal Pro-X Carboxypeptidase (PRCP) belongs to the peptidase S28 family. PRCP is detected in many tissues, with highest levels observed in placenta, lung, and liver. It is also present in the heart, brain, pancreas, and kidney. PRCP exists as a homodimer. PRCP cleaves C-terminal amino acids linked to proline in peptides such as angiotensin II, III and des-Arg9-bradykinin. This cleavage occurs at acidic pH, but enzymatic activity is retained with some substrates at neutral pH. PRCP has been shown to be an activator of the cell matrix-associated prekallikrein.

For Research Use Only

A Reliable Research Partner in Life Science and Medicine

Toll-free: 1-888-852-8623

Web: www.elabscience.com

Tel: 1-832-243-6086

Email: techsupport@elabscience.com

Fax: 1-832-243-6017