

Recombinant GOT1 Monoclonal Antibody

catalog number: **AN301537L**

Note: Centrifuge before opening to ensure complete recovery of vial contents.

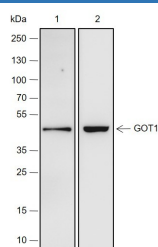
Description

Reactivity	Human;Rat;Mouse
Immunogen	Recombinant human GOT1 fragment
Host	Rabbit
Isotype	IgG, κ
Clone	A236
Purification	Protein A purified
Buffer	PBS, 50% glycerol, 0.05% Proclin 300, 0.05% protein protectant.

Applications Recommended Dilution

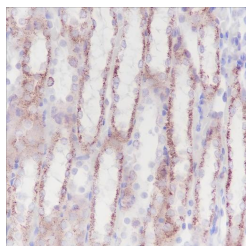
WB	1:1000-1:2000
IHC	1:100-1:1000

Data

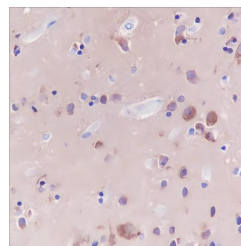


Western Blot with GOT1 Monoclonal Antibody at dilution of 1:2000. Lane 1: Mouse heart, Lane 2: Rat heart

Observed-MW:46 kDa
Calculated-MW:46 kDa



Immunohistochemistry of paraffin-embedded Rat kidney using GOT1 Monoclonal Antibody at dilution of 1:100.



Immunohistochemistry of paraffin-embedded Human cerebrum using GOT1 Monoclonal Antibody at dilution of 1:1000.

Preparation & Storage

Storage	Store at -20°C Valid for 12 months. Avoid freeze / thaw cycles.
Shipping	Ice bag

Background

Biosynthesis of L-glutamate from L-aspartate or L-cysteine. Important regulator of levels of glutamate, the major excitatory neurotransmitter of the vertebrate central nervous system. Acts as a scavenger of glutamate in brain neuroprotection. The aspartate aminotransferase activity is involved in hepatic glucose synthesis during development and in adipocyte glyceroneogenesis. Using L-cysteine as substrate, regulates levels of mercaptopyruvate, an important source of hydrogen sulfide. Mercaptopyruvate is converted into H₂S via the action of 3-mercaptopyruvate sulfurtransferase (3MST). Hydrogen sulfide is an important synaptic modulator and neuroprotectant in the brain.

For Research Use Only