

Purified Anti-Human LIN28A Antibody[14E6-4E6]

catalog number: AN010440P

Note: *Centrifuge before opening to ensure complete recovery of vial contents.*

Description

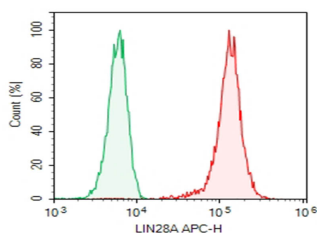
Reactivity	Human
Immunogen	Recombinant Human LIN28A protein
Host	Mouse
Isotype	Mouse IgG2a, κ
Clone	14E6-4E6
Purification	>98%, Protein A/G purified
Buffer	Phosphate-buffered solution, pH 7.2, containing 0.05% non-protein stabilizer. Dialyze to completely remove the stabilizer prior to labeling.

Applications

Recommended Dilution

FCM	2 µg/mL(0.5×10 ⁶ -1×10 ⁶ cells)
------------	---

Data



NTERA-2 cells were stained with 0.2 µg Purified Anti-Human LIN28A Antibody[14E6-4E6] (Right) and 0.2 µg Mouse IgG2a, κ Isotype Control(Left), followed by APC-conjugated Goat Anti-Mouse IgG Secondary Antibody.

Preparation & Storage

Storage	Store at 4°C valid for 12 months or -20°C valid for long term storage, avoid freeze / thaw cycles.
Shipping	Ice bag

Background

LIN28A is a highly conserved RNA-binding protein and reprogramming factor that plays important roles in development, self-renewal of stem cells, glucose metabolism and tumorigenesis. Lin28A modulates not only miRNAs, particularly the let-7 family miRNAs, but also the translation of mRNAs that are important for cell growth and metabolism. LIN28A/B has been observed to be overexpressed in a wide range of solid tumors and hematological malignancies, and has emerged as a new therapeutic target candidate for cancer.

For Research Use Only