

Recombinant CD150/SLAM/SLAMF1 Monoclonal Antibody

catalog number: **AN300350P**

Note: Centrifuge before opening to ensure complete recovery of vial contents.

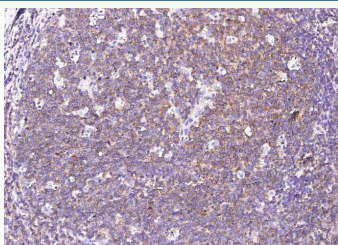
Description

Reactivity	Human
Immunogen	Recombinant Human CD150 protein
Host	Rabbit
Isotype	IgG
Clone	10F9
Purification	Protein A
Buffer	0.2 µm filtered solution in PBS

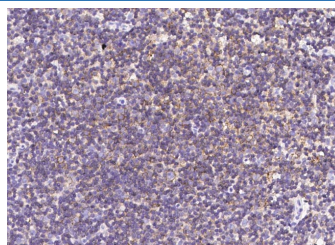
Applications Recommended Dilution

IHC-P	1:1000-1:4000
--------------	---------------

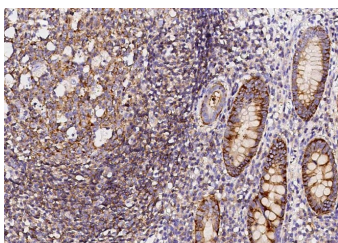
Data



Immunohistochemistry of paraffin-embedded human tonsil using CD150/SLAM/SLAMF1 Monoclonal Antibody at dilution of 1:2000.



Immunohistochemistry of paraffin-embedded human lymph node using CD150/SLAM/SLAMF1 Monoclonal Antibody at dilution of 1:2000.



Immunohistochemistry of paraffin-embedded human appendix using CD150/SLAM/SLAMF1 Monoclonal Antibody at dilution of 1:2000.

Preparation & Storage

Storage	This antibody can be stored at 2°C-8°C for one month without detectable loss of activity. Antibody products are stable for twelve months from date of receipt when stored at -20°C to -80°C. Preservative-Free. Avoid repeated freeze-thaw cycles.
Shipping	Ice bag

Background

SLAM-induced signal-transduction events in T-lymphocytes are different from those in B-cells. Two modes of SLAM signaling are likely to exist: one in which the inhibitor SH2D1A acts as a negative regulator and another in which protein-tyrosine phosphatase 2C (PTPN11)-dependent signal transduction operates.

For Research Use Only