

## Recombinant BLVRB/biliverdin reductase B Monoclonal Antibody

catalog number: **AN300265P**

**Note:** Centrifuge before opening to ensure complete recovery of vial contents.

### Description

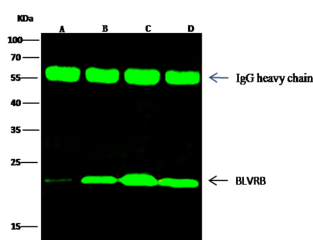
<b>Reactivity</b>	Human
<b>Immunogen</b>	Recombinant Human BLVRB / biliverdin reductase B protein
<b>Host</b>	Rabbit
<b>Isotype</b>	IgG
<b>Clone</b>	11B10
<b>Purification</b>	Protein A
<b>Buffer</b>	0.2 µm filtered solution in PBS

### Applications

### Recommended Dilution

<b>WB</b>	1:500-1:2000
<b>IP</b>	1-4 µL/mg of lysate

### Data



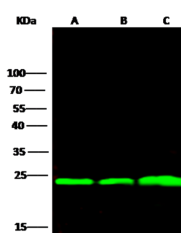
Immunoprecipitation analysis using 2 µL anti-BLVRB Monoclonal Antibody and 15 µl of 50 % Protein G agarose.

Western blot was performed from the immunoprecipitate using BLVRB Monoclonal Antibody at a dilution of 1:100.

Lane A: 0.5 mg Hela Whole Cell Lysate, Lane B: 0.5 mg HepG2 Whole Cell Lysate, Lane C: 0.5 mg K562 Whole Cell Lysate, Lane D: 0.5 mg Caco-2 Whole Cell Lysate

**Observed-MW: 22 kDa**

**Calculated-MW: 22 kDa**



Western Blot with BLVRB / biliverdin reductase B Monoclonal Antibody at dilution of 1:500. Lane A: Hela Whole Cell Lysate, Lane B: HepG2 Whole Cell Lysate, Lane C: K562 Whole Cell Lysate, Lysates/proteins at 30 µg per lane.

**Observed-MW: 22 kDa**

**Calculated-MW: 22 kDa**

### Preparation & Storage

**Storage** This antibody can be stored at 2°C-8°C for one month without detectable loss of activity. Antibody products are stable for twelve months from date of receipt when stored at -20°C to -80°C. Preservative-Free. Avoid repeated freeze-thaw cycles.

**Shipping** Ice bag

### Background

The final step in heme metabolism in mammals is catalyzed by the cytosolic biliverdin reductase enzymes A and B (EC 1.3.1.24). [supplied by OMIM, Jul 2006]

### For Research Use Only