

Recombinant IL36B/IL1F8 Monoclonal Antibody

catalog number: AN300570P

Note: Centrifuge before opening to ensure complete recovery of vial contents.

Description

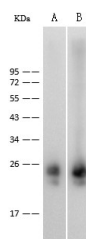
Reactivity	Mouse
Immunogen	Recombinant Mouse IL36B/IL1F8 Protein
Host	Rabbit
Isotype	IgG
Clone	10A9
Purification	Protein A
Buffer	0.2 µm filtered solution in PBS

Applications

Recommended Dilution

WB	1:500-1:2000
-----------	--------------

Data



Western Blot with IL1F8 Monoclonal Antibody at dilution of 1:500 dilution. Lane A: Mouse liver tissue lysate, Lane B: Mouse kidney tissue lysate, Lysates/proteins at 30 µg per lane.

Observed-MW:25 kDa

Calculated-MW:21 kDa

Preparation & Storage

Storage	This antibody can be stored at 2°C-8°C for one month without detectable loss of activity. Antibody products are stable for twelve months from date of receipt when stored at -20°C to -80°C. Preservative-Free. Avoid repeated freeze-thaw cycles.
Shipping	Ice bag

Background

Interleukin-1 family member 8(IL1F8) also known as IL36B, is a member of the interleukin 1(IL-1) cytokine family. IL1F8 may contain a 12-stranded beta-trefoil structure. Until recently, the IL-1 family of cytokines includes four members, with three having pro-inflammatory effects such as IL1F8 and the fourth member being an IL-1 receptor antagonist (IL-1Ra). IL-1 family members exert their effects through binding to receptors that belong to the IL-1 receptor (IL-1R) family. IL1F8 exerts proinflammatory effects in primary human joint cells. Joint and serum IL-1F8 protein levels did not correlate with inflammation, but they were high in some human serum samples tested, including samples from patients with rheumatoid arthritis. IL1F8 also activated NK-κB.

For Research Use Only

Toll-free: 1-888-852-8623
Web: www.elabscience.com

Tel: 1-832-243-6086
Email: techsupport@elabscience.com

Fax: 1-832-243-6017

Rev. V1.0