

Recombinant AATF Monoclonal Antibody

catalog number: **AN301423L**

Note: Centrifuge before opening to ensure complete recovery of vial contents.

Description

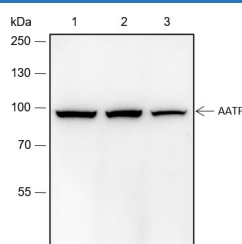
Reactivity	Human;
Immunogen	Recombinant human AATF fragment
Host	Rabbit
Isotype	IgG, κ
Clone	A118
Purification	Protein A purified
Buffer	PBS, 50% glycerol, 0.05% Proclin 300, 0.05% protein protectant.

Applications

Recommended Dilution

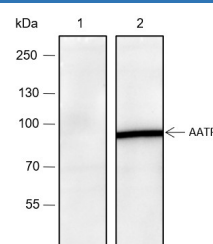
WB	1:500-1:1000
IF	1:200-1:500

Data



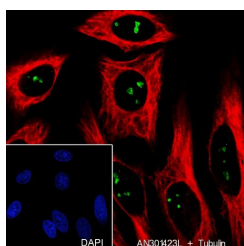
Western Blot with AATF Monoclonal Antibody at dilution of 1:1000. Lane 1: 293T, Lane 2: HeLa, Lane 3: HepG2

Observed-MW:80 kDa
Calculated-MW:63 kDa

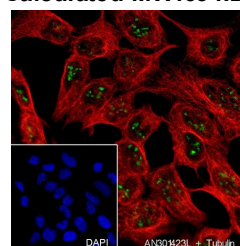


Western Blot with AATF Monoclonal Antibody at dilution of 1:1000. Lane 1: 293T cell lysate, the AATF Rabbit mAb pre-adsorbed with 3 μ M of the synthetic peptides, Lane 2: 293T cell lysate, the AATF Rabbit mAb with no peptide blocking.

Observed-MW:80 kDa
Calculated-MW:63 kDa



Immunofluorescent analysis of (100% methanol) fixed HeLa cells using anti-AATF Monoclonal Antibody at dilution of 1:200.



Immunofluorescent analysis of (100% methanol) fixed HEK-293 cells using anti-AATF Monoclonal Antibody at dilution of 1:500.

Preparation & Storage

Storage	Store at -20°C Valid for 12 months. Avoid freeze / thaw cycles.
Shipping	Ice bag

Background

AATF is an RNA polymerase II binding protein that participates in the transcriptional regulation of E2F target genes and cell proliferation, and protects cells from a variety of stress stimuli by inducing cell cycle arrest, autophagy or apoptosis inhibition. AATF can also be used as a general inhibitor of histone deacetylase HDAC1.

For Research Use Only

Toll-free: 1-888-852-8623
Web: www.elabscience.com

Tel: 1-832-243-6086
Email: techsupport@elabscience.com

Fax: 1-832-243-6017

Rev. V1.0