

## Recombinant CIRBP Monoclonal Antibody

catalog number: **AN300616L**

**Note:** Centrifuge before opening to ensure complete recovery of vial contents.

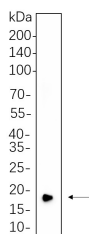
### Description

<b>Reactivity</b>	Human;Mouse;Rat
<b>Immunogen</b>	Recombinant Human CIRBP protein
<b>Host</b>	Rabbit
<b>Isotype</b>	IgG, $\kappa$
<b>Clone</b>	5A3
<b>Purification</b>	Protein A
<b>Buffer</b>	PBS, 50% glycerol, 0.05% Proclin 300, 0.05% protein protectant.

### Applications Recommended Dilution

<b>WB</b>	1:500-1:2000
-----------	--------------

### Data



Western Blot with Recombinant CIRBP Monoclonal Antibody  
at dilution of 1:1000 dilution. Lane A: Hela cell lysate.

**Observed-MW:19 kDa**

**Calculated-MW:19 kDa**

### Preparation & Storage

<b>Storage</b>	Store at -20°C Valid for 12 months. Avoid freeze / thaw cycles.
<b>Shipping</b>	Ice bag

### Background

Seems to play an essential role in cold-induced suppression of cell proliferation.,induction:By cold stress an in response to DNA damage induced by UV irradiation or UV mimetic agents.,similarity:Contains 1 RRM (RNA recognition motif) domain.,tissue specificity:Ubiquitous.

### For Research Use Only

Toll-free: 1-888-852-8623  
Web: [www.elabscience.com](http://www.elabscience.com)

Tel: 1-832-243-6086  
Email: [techsupport@elabscience.com](mailto:techsupport@elabscience.com)

Fax: 1-832-243-6017

Rev. V1.0