

## Recombinant B2M/beta-2 microglobulin Monoclonal Antibody

**catalog number: AN300591P**

**Note:** Centrifuge before opening to ensure complete recovery of vial contents.

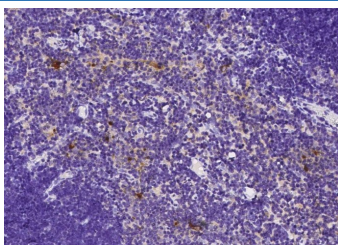
### Description

<b>Reactivity</b>	Rat
<b>Immunogen</b>	Recombinant Rat B2M/beta-2 microglobulin Protein
<b>Host</b>	Rabbit
<b>Isotype</b>	IgG
<b>Clone</b>	12B8
<b>Purification</b>	Protein A
<b>Buffer</b>	0.2 µm filtered solution in PBS

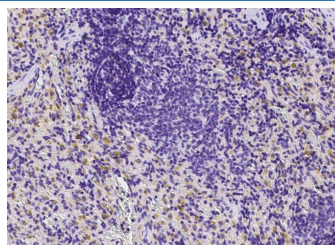
### Applications Recommended Dilution

<b>IHC-P</b>	1:100-1:500
--------------	-------------

### Data



Immunohistochemistry of paraffin-embedded rat thymus using B2M/beta-2 microglobulin Monoclonal Antibody at dilution of 1:200.



Immunohistochemistry of paraffin-embedded rat spleen using B2M/beta-2 microglobulin Monoclonal Antibody at dilution of 1:200.

### Preparation & Storage

<b>Storage</b>	This antibody can be stored at 2°C-8°C for one month without detectable loss of activity. Antibody products are stable for twelve months from date of receipt when stored at -20°C to -80°C. Preservative-Free. Avoid repeated freeze-thaw cycles.
<b>Shipping</b>	Ice bag

### Background

Component of the class I major histocompatibility complex (MHC). Involved in the presentation of peptide antigens to the immune system.

### For Research Use Only