

## GOT2 Monoclonal Antibody

**catalog number:** AN200071P

**Note:** Centrifuge before opening to ensure complete recovery of vial contents.

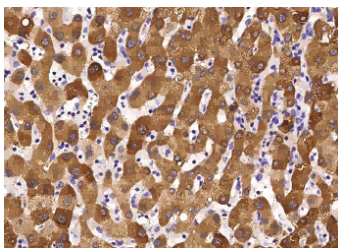
### Description

<b>Reactivity</b>	Human
<b>Immunogen</b>	A synthetic peptide corresponding to the C-terminus of the Human GOT2
<b>Host</b>	Mouse
<b>Isotype</b>	IgG1
<b>Clone</b>	4B5
<b>Purification</b>	Protein A
<b>Buffer</b>	0.2 µm filtered solution in PBS

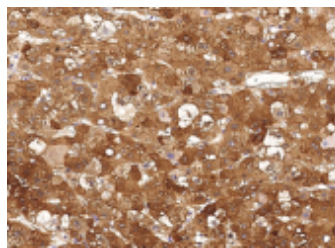
### Applications Recommended Dilution

<b>IHC-P</b>	1:50-1:200
--------------	------------

### Data



Immunohistochemistry of paraffin-embedded human liver using GOT2 Monoclonal Antibody at dilution of 1:100.



Immunohistochemistry of paraffin-embedded human hepatoma using GOT2 Monoclonal Antibody at dilution of 1:100.

### Preparation & Storage

<b>Storage</b>	This antibody can be stored at 2°C-8°C for one month without detectable loss of activity. Antibody products are stable for twelve months from date of receipt when stored at -20°C to -80°C. Preservative-Free. Avoid repeated freeze-thaw cycles.
<b>Shipping</b>	Ice bag

### Background

Glutamic-oxaloacetic transaminase is a pyridoxal phosphate-dependent enzyme which exists in cytoplasmic and inner-membrane mitochondrial forms, GOT1 and GOT2, respectively. GOT plays a role in amino acid metabolism and the urea and tricarboxylic acid cycles. The two enzymes are homodimeric and show close homology. Two transcript variants encoding different isoforms have been found for this gene.

### For Research Use Only