

Purified Anti-Human CD25 Antibody[7G7B6]

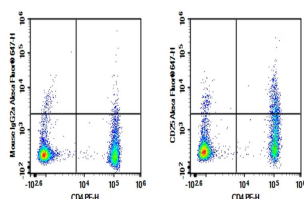
catalog number: AN007550P

Note: Centrifuge before opening to ensure complete recovery of vial contents.

Description	
Reactivity	Human
Immunogen	Recombinant Human CD25 protein
Host	Mouse
Isotype	Mouse IgG2a, κ
Clone	7G7B6
Purification	>98%, Protein A/G purified
Conjugation	Unconjugated
Buffer	PBS, pH 7.2. Contains 0.05% proclin 300.

Applications	Recommended Dilution
FCM	2 µg/mL (1×10^5 - 5×10^5 cells)

Data



Human peripheral blood lymphocytes cell were stained with 0.2 µg Purified Anti-Human CD25 Antibody[7G7B6] (Right) and 0.2 µg Mouse IgG2a, κ Isotype Control (Left), followed by Alexa Fluor® 647-conjugated Goat Anti-Mouse IgG Secondary Antibody, then anti-Human CD4 PE-conjugated Monoclonal Antibody.

Preparation & Storage	
Storage	Store at 4°C valid for 12 months or -20°C valid for long term storage, avoid freeze / thaw cycles.
Shipping	Ice bag

Background

The interleukin 2 (IL2) receptor alpha (IL2RA) and beta (IL2RB) chains, together with the common gamma chain (IL2RG), constitute the high-affinity IL2 receptor. Homodimeric alpha chains (IL2RA) result in low-affinity receptor, while homodimeric beta (IL2RB) chains produce a medium-affinity receptor. Normally an integral-membrane protein, soluble IL2RA has been isolated and determined to result from extracellular proteolysis. Alternately-spliced IL2RA mRNAs have been isolated, but the significance of each is presently unknown. Mutations in this gene are associated with interleukin 2 receptor alpha deficiency.