

Recombinant Ano1 Monoclonal Antibody

catalog number: **AN300309P**

Note: Centrifuge before opening to ensure complete recovery of vial contents.

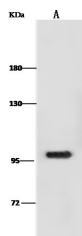
Description

Reactivity	Human
Immunogen	A synthetic peptide corresponding to the C-terminus of the Human Ano1
Host	Rabbit
Isotype	IgG
Clone	7F11
Purification	Protein A
Buffer	0.2 µm filtered solution in PBS

Applications Recommended Dilution

WB	1:500-1:2000
-----------	--------------

Data



Western Blot with ANO1 Monoclonal Antibody at dilution of 1:500. Lane A: A549 Whole Cell Lysate, Lysates/proteins at 30 µg per lane.

Observed-MW:114 kDa
Calculated-MW:114 kDa

Preparation & Storage

Storage	This antibody can be stored at 2°C-8°C for one month without detectable loss of activity. Antibody products are stable for twelve months from date of receipt when stored at -20°C to -80°C. Preservative-Free. Avoid repeated freeze-thaw cycles.
Shipping	Ice bag

Background

Calcium-activated chloride channel (CaCC which plays a role in transepithelial anion transport and smooth muscle contraction. Required for the normal functioning of the interstitial cells of Cajal (ICCs which generate electrical pacemaker activity in gastrointestinal smooth muscles. Acts as a major contributor to basal and stimulated chloride conductance in airway epithelial cells and plays an important role in tracheal cartilage development.

For Research Use Only