

Recombinant ENTPD5 Monoclonal Antibody

catalog number: **AN300225P**

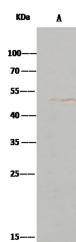
Note: Centrifuge before opening to ensure complete recovery of vial contents.

Description

Reactivity	Human
Immunogen	Recombinant Human ENTPD5 protein
Host	Rabbit
Isotype	IgG
Clone	7A9
Purification	Protein A
Buffer	0.2 µm filtered solution in PBS

Applications Recommended Dilution

WB	1:500-1:1000
IHC-P	1:500-1:2000
IP	0.2-1 µL/mg of lysate



Immunoprecipitation analysis using 0.5 µL anti-ENTPD5 Monoclonal Antibody and 15 µl of 50 % Protein G agarose.

Western blot was performed from the immunoprecipitate using ENTPD5 Monoclonal Antibody at a dilution of 1:500.

Lane A: 0.5 mg HepG2 Whole Cell Lysate

Observed-MW: 47 kDa

Calculated-MW: 47 kDa

Preparation & Storage

Storage This antibody can be stored at 2°C-8°C for one month without detectable loss of activity. Antibody products are stable for twelve months from date of receipt when stored at -20°C to -80°C. Preservative-Free. Avoid repeated freeze-thaw cycles.

Shipping Ice bag

Background

The protein encoded by this gene is similar to E-type nucleotidases (NTPases)/ecto-ATPase/apyrases. NTPases, such as CD39, mediate catabolism of extracellular nucleotides. ENTPD5 contains 1 apyrase-conserved regions which is characteristic of NTPases.

For Research Use Only