

Recombinant HLA-DRA Monoclonal Antibody

catalog number: **AN301552L**

Note: Centrifuge before opening to ensure complete recovery of vial contents.

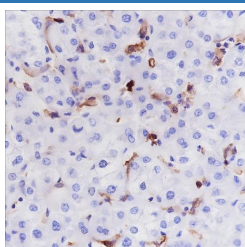
Description

Reactivity	Human;
Immunogen	Recombinant human HLA-DRA fragment
Host	Rabbit
Isotype	IgG, κ
Clone	A251
Purification	Protein A purified
Buffer	PBS, 50% glycerol, 0.05% Proclin 300, 0.05% protein protectant.

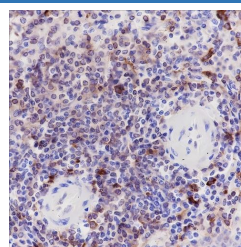
Applications

Applications	Recommended Dilution
IHC	1:50-1:100
FCM	1:50

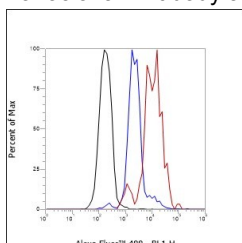
Data



Immunohistochemistry of paraffin-embedded Human liver using HLA-DRA Monoclonal Antibody at dilution of 1:100.



Immunohistochemistry of paraffin-embedded Human spleen using HLA-DRA Monoclonal Antibody at dilution of 1:100.



Flow cytometric analysis of human HLA-DRA expression on PBMC cells. Cells were stained with purified anti-Human HLA-DRA, then a Alexa Fluor 488-conjugated second step antibody. The histogram were derived from events with the forward and side light-scatter characteristics of intact cells.

Preparation & Storage

Storage	Store at -20°C Valid for 12 months. Avoid freeze / thaw cycles.
Shipping	Ice bag

Background

An alpha chain of antigen-presenting major histocompatibility complex class II (MHCII) molecule. In complex with the beta chain HLA-DRB, displays antigenic peptides on professional antigen presenting cells (APCs) for recognition by alpha-beta T cell receptor (TCR) on HLA-DR-restricted CD4-positive T cells.

For Research Use Only

Toll-free: 1-888-852-8623
Web: www.elabscience.com

Tel: 1-832-243-6086
Email: techsupport@elabscience.com

Fax: 1-832-243-6017

Rev. V1.0