

## Recombinant CD62L Monoclonal Antibody

catalog number: **AN301484L**

**Note:** Centrifuge before opening to ensure complete recovery of vial contents.

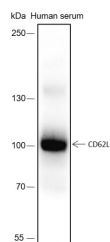
### Description

<b>Reactivity</b>	Human;
<b>Immunogen</b>	Recombinant human CD62L fragment
<b>Host</b>	Rabbit
<b>Isotype</b>	IgG, $\kappa$
<b>Clone</b>	A179
<b>Purification</b>	Protein A purified
<b>Buffer</b>	PBS, 50% glycerol, 0.05% Proclin 300, 0.05% protein protectant.

### Applications Recommended Dilution

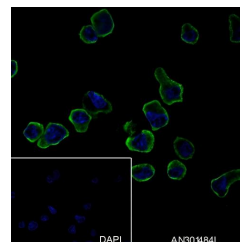
<b>WB</b>	1:500-1:1000
<b>IF</b>	1:50
<b>FCM</b>	1:50

### Data

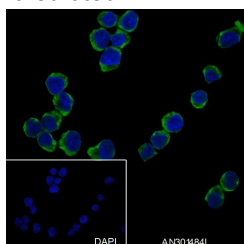


Western Blot with CD62L Monoclonal Antibody at dilution of 1:1000. Lane 1: Human serum

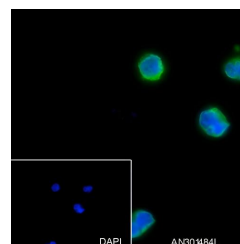
**Observed-MW:100 kDa**  
**Calculated-MW:42 kDa**



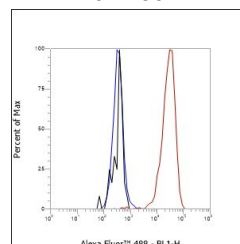
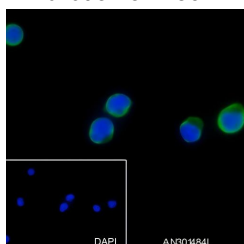
Immunofluorescent analysis of (4% Paraformaldehyde) fixed EL4 cells using anti-CD62L Monoclonal Antibody at dilution of 1:50.



Immunofluorescent analysis of (4% Paraformaldehyde) fixed Ramos cells using anti-CD62L Monoclonal Antibody at dilution of 1:50.



Immunofluorescent analysis of (4% Paraformaldehyde) fixed Raji cells using anti-CD62L Monoclonal Antibody at dilution of 1:50.



### For Research Use Only

Toll-free: 1-888-852-8623  
Web: [www.elabscience.com](http://www.elabscience.com)

Tel: 1-832-243-6086  
Email: [techsupport@elabscience.com](mailto:techsupport@elabscience.com)

Fax: 1-832-243-6017

Rev. V1.0

Immunofluorescent analysis of (4% Paraformaldehyde) fixed Jurkat cells using anti-CD62L Monoclonal Antibody at dilution of 1:50.

Flow cytometric analysis of human CD62L expression on PBMC cells. Cells were stained with purified anti-Human CD62L, then a Alexa Fluor 488-conjugated second step antibody. The histogram were derived from events with the forward and side light-scatter characteristics of intact cells.

## Preparation & Storage

**Storage**

Store at -20°C Valid for 12 months. Avoid freeze / thaw cycles.

**Shipping**

Ice bag

## Background

Calcium-dependent lectin that mediates cell adhesion by binding to glycoproteins on neighboring cells. Mediates the adherence of lymphocytes to endothelial cells of high endothelial venules in peripheral lymph nodes. Promotes initial tethering and rolling of leukocytes in endothelia.

## For Research Use Only

Toll-free: 1-888-852-8623  
Web: [www.elabscience.com](http://www.elabscience.com)

Tel: 1-832-243-6086  
Email: [techsupport@elabscience.com](mailto:techsupport@elabscience.com)

Fax: 1-832-243-6017

Rev. V1.0