

## Recombinant Phospho-Chk1 (Ser317) Monoclonal Antibody

catalog number: **AN300380L**

**Note:** Centrifuge before opening to ensure complete recovery of vial contents.

### Description

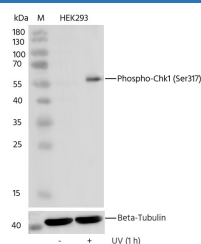
<b>Reactivity</b>	Human
<b>Immunogen</b>	A synthetic phosphopeptide corresponding to residues around Ser317 of human Chk1.
<b>Host</b>	Rabbit
<b>Isotype</b>	IgG
<b>Clone</b>	11G3
<b>Purification</b>	Protein A
<b>Buffer</b>	10 mM sodium HEPES, 150 mM NaCl, 100 µg/mL protein protectant, 50% glycerol, pH 7.5

### Applications

### Recommended Dilution

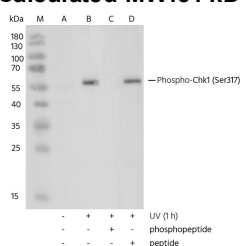
<b>WB</b>	1:1000-1:2000
<b>IHC-P</b>	1:500-1:2000

### Data



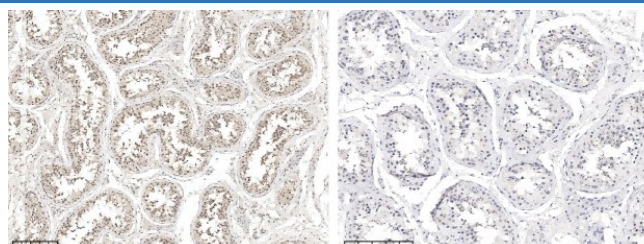
Western blot analysis of extracts from serum-starved HEK293, untreated (-) or treated with UV (1 h; +), using Phospho-Chk1 (Ser317) rabbit Monoclonal Antibody at 1:2000 dilution. (upper) or Beta-Tubulin Loading Control Antibody, Rabbit MAb (Chimeric) at 1:40000 dilution(lower).

**Observed-MW:58 kDa**  
**Calculated-MW:54 kDa**

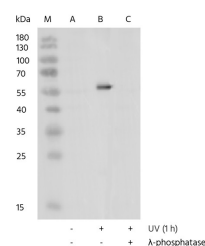


Western blot analysis of extracts from serum-starved HEK293, untreated (line A); treated with UV (1 h), without peptide (line B) or antigen-specific phosphopeptide (line C) or antigen-specific peptide (line D) using Phospho-Chk1 (Ser317) rabbit monoclonal Antibody at 1:2000 dilution.

**Observed-MW:58 kDa**  
**Calculated-MW:54 kDa**



Immunohistochemistry of paraffin-embedded human testis using Chk1 (Ser317) Monoclonal Antibody at dilution of 1:1000.



Western blot analysis of extracts from serum-starved HEK-293, untreated (-) (line A); treated with UV (1 h; +) (line B); treated with UV and λ-phosphatase (line C) using Phospho-Chk1 (Ser317) rabbit monoclonal Antibody at 1:2000 dilution.

**Observed-MW:58 kDa**  
**Calculated-MW:54 kDa**

### Preparation & Storage

### For Research Use Only

Toll-free: 1-888-852-8623  
Web: [www.elabscience.com](http://www.elabscience.com)

Tel: 1-832-243-6086  
Email: [techsupport@elabscience.com](mailto:techsupport@elabscience.com)

Fax: 1-832-243-6017

Rev. V1.0

**Storage**

This antibody can be stored at 2°C-8°C for one month without detectable loss of activity. Antibody products are stable for twelve months from date of receipt when stored at -20°C to -80°C. Preservative-Free. Avoid repeated freeze-thaw cycles.

**Shipping**

Ice bag

**Background**

The protein encoded by this gene belongs to the Ser/Thr protein kinase family. It is required for checkpoint mediated cell cycle arrest in response to DNA damage or the presence of unreplicated DNA. This protein acts to integrate signals from ATM and ATR, two cell cycle proteins involved in DNA damage responses, that also associate with chromatin in meiotic prophase I. Phosphorylation of CDC25A protein phosphatase by this protein is required for cells to delay cell cycle progression in response to double-strand DNA breaks. Several alternatively spliced transcript variants have been found for this gene.

**For Research Use Only**

Toll-free: 1-888-852-8623  
Web: [www.elabscience.com](http://www.elabscience.com)

Tel: 1-832-243-6086  
Email: [techsupport@elabscience.com](mailto:techsupport@elabscience.com)

Fax: 1-832-243-6017

Rev. V1.0