

Recombinant VEGFA Monoclonal Antibody

catalog number: **AN300844L**

Note: Centrifuge before opening to ensure complete recovery of vial contents.

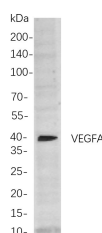
Description

Reactivity	Human;Mouse;Rat;Pig;Rabbit
Immunogen	Recombinant Human VEGFA protein
Host	Rabbit
Isotype	IgG, κ
Clone	B787
Purification	Protein A
Buffer	PBS, 50% glycerol, 0.05% Proclin 300, 0.05% protein protectant.

Applications Recommended Dilution

IHC	1:1000-1:5000
WB	1:2000-1:10000
IF	1:200-1:1000
ELISA	1:5000-1:20000

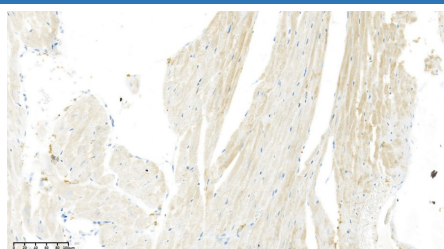
Data



Western Blot with Recombinant VEGFA Monoclonal Antibody at dilution of 1:1000 dilution. Lane A: SH-SY5Y cells.

Observed-MW:40 kDa

Calculated-MW:27 kDa



Immunohistochemistry of paraffin-embedded rat heart using Recombinant VEGFA Monoclonal Antibody at dilution of 1:200.

Preparation & Storage

Storage	Store at -20°C Valid for 12 months. Avoid freeze / thaw cycles.
Shipping	Ice bag

Background

This gene is a member of the PDGF/VEGF growth factor family. It encodes a heparin-binding protein, which exists as a disulfide-linked homodimer. This growth factor induces proliferation and migration of vascular endothelial cells, and is essential for both physiological and pathological angiogenesis. Disruption of this gene in mice resulted in abnormal embryonic blood vessel formation. This gene is upregulated in many known tumors and its expression is correlated with tumor stage and progression. Elevated levels of this protein are found in patients with POEMS syndrome, also known as Crow-Fukase syndrome. Allelic variants of this gene have been associated with microvascular complications of diabetes 1 (MCD1) and atherosclerosis. Alternatively spliced transcript variants encoding different isoforms have been described.

For Research Use Only

Toll-free: 1-888-852-8623
Web: www.elabscience.com

Tel: 1-832-243-6086
Email: techsupport@elabscience.com

Fax: 1-832-243-6017

Rev. V1.3