

Purified Anti-G4S linker Antibody[DA010]

catalog number: AN011300P

Note: Centrifuge before opening to ensure complete recovery of vial contents.

Description

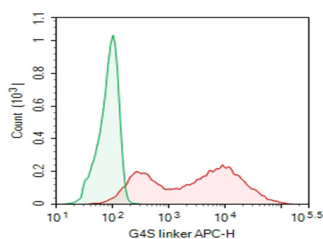
Immunogen	Synthetic peptide
Host	Rabbit
Isotype	Rabbit IgG
Clone	DA010
Purification	>98%, Protein A/G purified
Buffer	Phosphate-buffered solution, pH 7.2, containing 0.05% non-protein stabilizer. Dialyze to completely remove the stabilizer prior to labeling.

Applications

Recommended Dilution

FCM	2 µg/mL(0.5×10 ⁶ -1×10 ⁶ cells)
------------	---

Data



HEK293T cells transfected with anti-CD19(FMC63 scFv with G4S linker) CAR were stained with 0.2 µg Purified Anti- G4S linker Antibody[DA010] (Right) and 0.2 µg Rabbit IgG, κ Isotype Control (Left), followed by APC-conjugated Goat Anti-Rabbit IgG Secondary Antibody.

Preparation & Storage

Storage	Store at 4°C valid for 12 months or -20°C valid for long term storage, avoid freeze / thaw cycles.
Shipping	Ice bag

Background

The G4S linker is emerged as the most common linking peptides for scFvs. It is composed of the repeated sequence (Gly-Gly-Gly-Gly-Ser) and commonly found as either a 15-mer (G4S)³ or 20-mer(G4S)⁴ within scFv fragments. The G4S linker has become an integral part of the vast majority of CARs as it links the VH and VL recognition domains of scFvs. The G4S linker is commonly used in CARs targeting solid tumor antigens, such as HER2 and CEA, while the whitlow/218 linker peptide is predominantly used in CAR constructs targeting hematological malignancies such as CD19 CAR products.

For Research Use Only