

Recombinant Amy2 Monoclonal Antibody

catalog number: **AN301436L**

Note: Centrifuge before opening to ensure complete recovery of vial contents.

Description

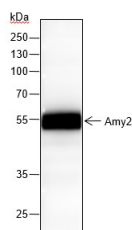
| | |
|---------------------|---|
| Reactivity | Rat;Mouse |
| Immunogen | Synthetic peptide derived from Amy2 anti |
| Host | Rabbit |
| Isotype | IgG, κ |
| Clone | A131 |
| Purification | Protein A purified |
| Buffer | PBS, 50% glycerol, 0.05% Proclin 300, 0.05% protein protectant. |

Applications

Recommended Dilution

| | |
|-----------|--------------|
| WB | 1:500-1:2000 |
|-----------|--------------|

Data



Western Blot with Amy2 Monoclonal Antibody at dilution of 1: 2000. Lane 1: Mouse pancreas

Observed-MW:57 kDa

Calculated-MW:58 kDa

Preparation & Storage

| | |
|-----------------|---|
| Storage | Store at -20°C Valid for 12 months. Avoid freeze / thaw cycles. |
| Shipping | Ice bag |

Background

α -amylase catalyzes the cleavage of 1, 4- α -D-glucosidic bonds in oligosaccharides and polysaccharides. The enzyme is normally produced and secreted in salivary glands (salivary α -amylase or AMY1) and pancreas (pancreatic α -amylase or AMY2A). Studies reported the release of an ectopically expressed α -amylase in certain tumors. Furthermore, a new type of α -amylase (carcinoid α -amylase or AMY2B) was identified in a lung carcinoid tissue. The ectopic expression of α -amylase in a neuroendocrine tumor was also reported.

For Research Use Only

Toll-free: 1-888-852-8623
Web: www.elabscience.com

Tel: 1-832-243-6086
Email: techsupport@elabscience.com

Fax: 1-832-243-6017

Rev. V1.0