

Recombinant KRT14/Cytokeratin 14 Monoclonal Antibody

catalog number: **AN300289P**

Note: Centrifuge before opening to ensure complete recovery of vial contents.

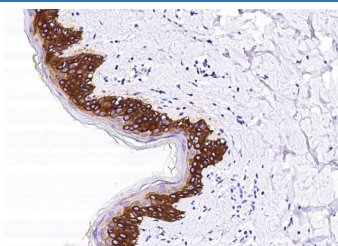
Description

Reactivity	Human
Immunogen	A synthetic peptide corresponding to the N-terminus of the human Cytokeratin 14.
Host	Rabbit
Isotype	IgG
Clone	1A7
Purification	Protein A
Buffer	0.2 µm filtered solution in PBS

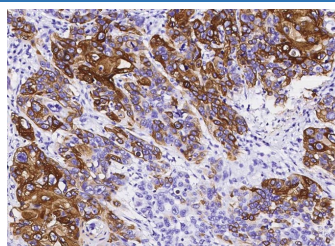
Applications Recommended Dilution

WB	1:500-1:2000
IHC-P	1:10000-1:20000
IP	1-4 µL/mg of lysate

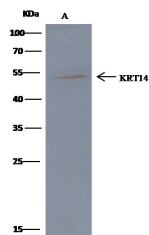
Data



Immunohistochemistry of paraffin-embedded human skin using KRT14/Cytokeratin 14 Monoclonal Antibody at dilution of 1:20000.

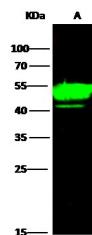


Immunohistochemistry of paraffin-embedded human esophageal carcinoma using KRT14/Cytokeratin 14 Monoclonal Antibody at dilution of 1:20000.



Immunoprecipitation analysis using 2 µL anti-KRT14 Monoclonal Antibody and 60 µg of Immunomagnetic beads Protein G. Western blot was performed from the immunoprecipitate using KRT14 Monoclonal Antibody at a dilution of 1:100. Lane A: 0.5 mg A431 Whole Cell Lysate

Observed-MW: 52 kDa
Calculated-MW: 52 kDa



Western Blot with Cytokeratin14 Monoclonal Antibody at dilution of 1:500 dilution. Lane A: A431 Whole Cell Lysate, Lysates/proteins at 30 µg per lane.

Observed-MW: 52 kDa
Calculated-MW: 52 kDa

Preparation & Storage

Storage	This antibody can be stored at 2°C-8°C for one month without detectable loss of activity. Antibody products are stable for twelve months from date of receipt when stored at -20°C to -80°C. Preservative-Free. Avoid repeated freeze-thaw cycles.
Shipping	Ice bag

For Research Use Only

Background

This gene encodes a member of the keratin family, the most diverse group of intermediate filaments. This gene product, a type I keratin, is usually found as a heterotetramer with two keratin 5 molecules, a type II keratin. Together they form the cytoskeleton of epithelial cells. Mutations in the genes for these keratins are associated with epidermolysis bullosa simplex. At least one pseudogene has been identified at 17p12-p11.

For Research Use Only

Toll-free: 1-888-852-8623
Web: www.elabscience.com

Tel: 1-832-243-6086
Email: techsupport@elabscience.com

Fax: 1-832-243-6017

Rev. V1.0