

Recombinant BAP31 Monoclonal Antibody

catalog number: **AN301443L**

Note: Centrifuge before opening to ensure complete recovery of vial contents.

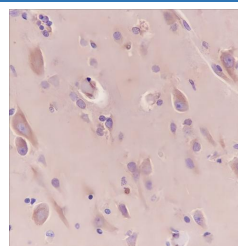
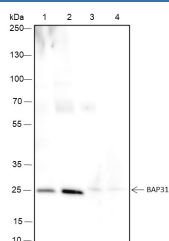
Description

Reactivity	Human;Rat;Mouse
Immunogen	Recombinant human BAP31 fragment
Host	Rabbit
Isotype	IgG, κ
Clone	A138
Purification	Protein A purified
Buffer	PBS, 50% glycerol, 0.05% Proclin 300, 0.05% protein protectant.

Applications Recommended Dilution

WB	1:500-1:1000
IHC	1:50-1:100
IF	1:50

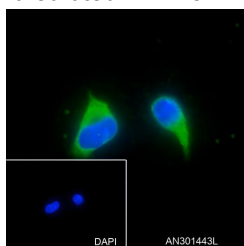
Data



Western Blot with BAP31 Monoclonal Antibody at dilution of 1:1000. Lane 1: HeLa, Lane 2: 293, Lane 3: 4T1, Lane 4: Rat liver

Immunohistochemistry of paraffin-embedded Human brain using BAP31 Monoclonal Antibody at dilution of 1:100.

Observed-MW:28 kDa
Calculated-MW:28 kDa



Immunofluorescent analysis of (100% Ice-cold methanol) fixed U-2 OS cells using anti-BAP31 Monoclonal Antibody at dilution of 1:50.

Preparation & Storage

Storage	Store at -20°C Valid for 12 months. Avoid freeze / thaw cycles.
Shipping	Ice bag

Background

For Research Use Only

Toll-free: 1-888-852-8623
Web: www.elabscience.com

Tel: 1-832-243-6086
Email: techsupport@elabscience.com

Fax: 1-832-243-6017

Rev. V1.0

Functions as a chaperone protein. Is one of the most abundant endoplasmic reticulum (ER) proteins. Plays a role in the export of secreted proteins in the ER, the recognition of abnormally folded protein and their targeting to the ER associated-degradation (ERAD). Also serves as a cargo receptor for the export of transmembrane proteins. May be involved in CASP8-mediated apoptosis.