

Recombinant GLUD1 Monoclonal Antibody

catalog number: **AN301531L**

Note: Centrifuge before opening to ensure complete recovery of vial contents.

Description

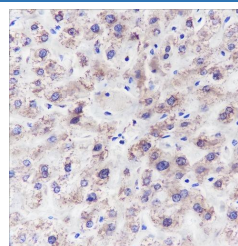
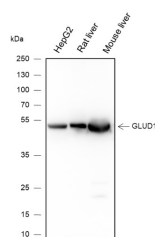
Reactivity	Human;Rat;Mouse
Immunogen	Recombinant human GLUD1 fragment
Host	Rabbit
Isotype	IgG, κ
Clone	A230
Purification	Protein A purified
Buffer	PBS, 50% glycerol, 0.05% Proclin 300, 0.05% protein protectant.

Applications

Recommended Dilution

WB	1:1000-1:5000
IHC	1:50-1:100
IF	1:50

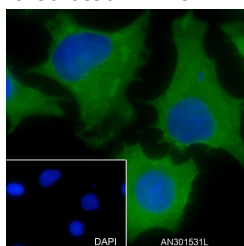
Data



Western Blot with GLUD1 Monoclonal Antibody at dilution of 1:5000. Lane 1: HepG2, Lane 2: Rat liver, Lane 3: Mouse liver

Immunohistochemistry of paraffin-embedded Human liver using GLUD1 Monoclonal Antibody at dilution of 1:100.

Observed-MW:52 kDa
Calculated-MW:52 kDa



Immunofluorescent analysis of (100% Ice-cold methanol) fixed HeLa cells using anti-GLUD1 Monoclonal Antibody at dilution of 1:50.

Preparation & Storage

Storage	Store at -20°C Valid for 12 months. Avoid freeze / thaw cycles.
Shipping	Ice bag

Background

For Research Use Only

Mitochondrial glutamate dehydrogenase that catalyzes the conversion of L-glutamate into alpha-ketoglutarate. Plays a key role in glutamine anaplerosis by producing alpha-ketoglutarate, an important intermediate in the tricarboxylic acid cycle. Plays a role in insulin homeostasis. May be involved in learning and memory reactions by increasing the turnover of the excitatory neurotransmitter glutamate.

For Research Use Only

Toll-free: 1-888-852-8623
Web: www.elabscience.com

Tel: 1-832-243-6086
Email: techsupport@elabscience.com

Fax: 1-832-243-6017

Rev. V1.0