

Recombinant Chromogranin A/CHGA/CGA Monoclonal Antibody

catalog number: **AN300072P**

Note: Centrifuge before opening to ensure complete recovery of vial contents.

Description

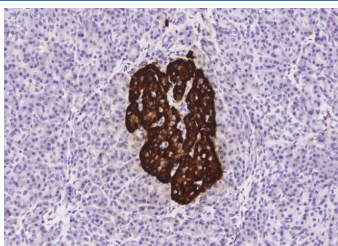
Reactivity	Human
Immunogen	A synthetic peptide corresponding to the center region of the Human Chromogranin A/CHGA/CGA
Host	Rabbit
Isotype	IgG
Clone	A1182
Purification	Protein A
Buffer	0.2 µm filtered solution in PBS

Applications

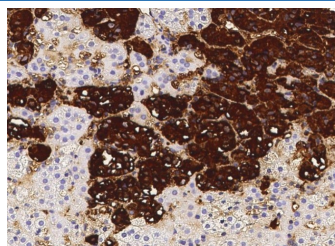
Recommended Dilution

IHC-P	1:1000-1:4000
--------------	---------------

Data



Immunohistochemistry of paraffin-embedded human pancreas using Chromogranin A/CHGA/CGA Monoclonal Antibody at dilution of 1:2000.



Immunohistochemistry of paraffin-embedded human adrenal gland using Chromogranin A/CHGA/CGA Monoclonal Antibody at dilution of 1:2000.

Preparation & Storage

Storage	This antibody can be stored at 2°C-8°C for one month without detectable loss of activity. Antibody products are stable for twelve months from date of receipt when stored at -20°C to -80°C. Preservative-Free. Avoid repeated freeze-thaw cycles.
Shipping	Ice bag

Background

Human Chromogranin A (CHGA) an acidic protein and a member of the chromogranin/secretogranin family of neuroendocrine secretory proteins. It is located in secretory vesicles of neurons and endocrine cells such as islet beta cell secretory granules in pancreas. Chromogranin A expression has been observed in neuroendocrine tumors, medullary thyroid carcinoma, as well as carcinoid tumors.

For Research Use Only