

Recombinant Phospho-Rpb1 (Ser5) Monoclonal Antibody

catalog number: **AN301164L**

Note: Centrifuge before opening to ensure complete recovery of vial contents.

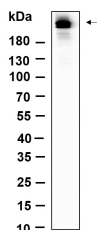
Description

Reactivity	Human;Mouse;Rat
Immunogen	A synthetic peptide corresponding to residues around (Ser5) of Human Phospho-Rpb1
Host	Rabbit
Isotype	IgG, κ
Clone	B923
Purification	Protein A
Buffer	PBS, 50% glycerol, 0.05% Proclin 300, 0.05% protein protectant.

Applications Recommended Dilution

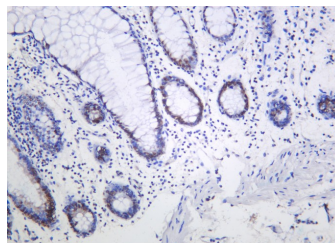
IHC	1:200-1:1000
WB	1:500-1:2000
IF	1:200-1:1000
ELISA	1:5000-1:20000
IP	1:50-1:200

Data



Western Blot with Recombinant Phospho-Rpb1 (Ser5) Monoclonal Antibody at dilution of 1:1000 dilution. Lane A: NIH-3T3.

Observed-MW:217 kDa
Calculated-MW:217 kDa



Immunohistochemistry of paraffin-embedded human colon using Recombinant Phospho-Rpb1 (Ser5) Monoclonal Antibody at dilution of 1:200.

Preparation & Storage

Storage	Store at -20°C Valid for 12 months. Avoid freeze / thaw cycles.
Shipping	Ice bag

Background

This gene encodes the largest subunit of RNA polymerase II, the polymerase responsible for synthesizing messenger RNA in eukaryotes. The product of this gene contains a carboxy terminal domain composed of heptapeptide repeats that are essential for polymerase activity. These repeats contain serine and threonine residues that are phosphorylated in actively transcribing RNA polymerase. In addition, this subunit, in combination with several other polymerase subunits, forms the DNA binding domain of the polymerase, a groove in which the DNA template is transcribed into RNA.

For Research Use Only