

Recombinant Cathepsin D/CTSD Monoclonal Antibody

catalog number: **AN300423P**

Note: *Centrifuge before opening to ensure complete recovery of vial contents.*

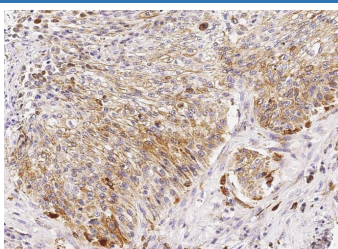
Description

Reactivity	Human
Immunogen	Recombinant Human Cathepsin D/CTSD protein
Host	Rabbit
Isotype	IgG
Clone	3G8
Purification	Protein A
Buffer	0.2 µm filtered solution in PBS

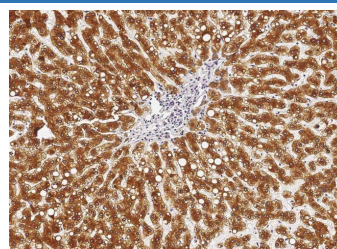
Applications Recommended Dilution

WB	1:500-1:2000
IHC-P	1:100-1:500

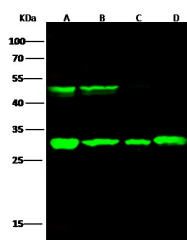
Data



Immunohistochemistry of paraffin-embedded human lung cancer using Cathepsin D/CTSD Monoclonal Antibody at dilution of 1:300.

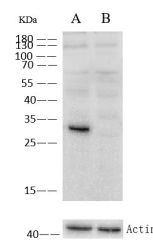


Immunohistochemistry of paraffin-embedded human cirrhosis using Cathepsin D/CTSD Monoclonal Antibody at dilution of 1:300.



Western Blot with CTSD Monoclonal Antibody at dilution of 1:500 dilution. Lane A: MCF7 Whole Cell Lysate, Lane B: A431 Whole Cell Lysate, Lane C: HepG2 Whole Cell Lysate, Lane D: SKBR3 Whole Cell Lysate, Lysates/proteins at 30 µg per lane.

Observed-MW:31 kDa
Calculated-MW:45 kDa



Western Blot with CTSD Monoclonal Antibody at dilution of 1:500 dilution. Lane A: 293T Whole Cell Lysate, Lane B: CTSD konckout 293T Whole Cell Lysate, Lysates/proteins at 30 µg per lane.

Observed-MW:31 kDa
Calculated-MW:45 kDa

Preparation & Storage

Storage	This antibody can be stored at 2°C-8°C for one month without detectable loss of activity. Antibody products are stable for twelve months from date of receipt when stored at -20°C to -80°C. Preservative-Free. Avoid repeated freeze-thaw cycles.
Shipping	Ice bag

Background

For Research Use Only

Toll-free: 1-888-852-8623
Web: www.elabscience.com

Tel: 1-832-243-6086
Email: techsupport@elabscience.com

Fax: 1-832-243-6017

Rev. V1.0

This gene encodes a member of the A1 family of peptidases. The encoded preproprotein is proteolytically processed to generate multiple protein products. These products include the cathepsin D light and heavy chains, which heterodimerize to form the mature enzyme. This enzyme exhibits pepsin-like activity and plays a role in protein turnover and in the proteolytic activation of hormones and growth factors. Mutations in this gene play a causal role in neuronal ceroid lipofuscinosis-10 and may be involved in the pathogenesis of several other diseases, including breast cancer and possibly Alzheimer's disease.