

Recombinant STUB1 Monoclonal Antibody

catalog number: **AN300116P**

Note: Centrifuge before opening to ensure complete recovery of vial contents.

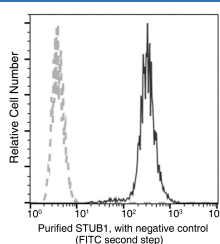
Description

Reactivity	Human
Immunogen	Recombinant Human STUB1 protein
Host	Rabbit
Isotype	IgG
Clone	A1230
Purification	Protein A
Buffer	0.2 µm filtered solution in PBS

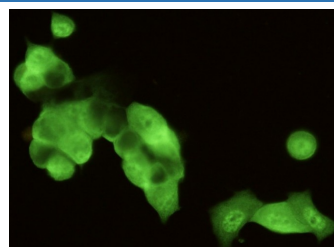
Applications

Applications	Recommended Dilution
WB	1:500-1:2000
FCM	1:100-1:500
ICC/IF	1:100-1:500
IP	1-4 µL/mg of lysate

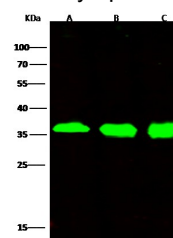
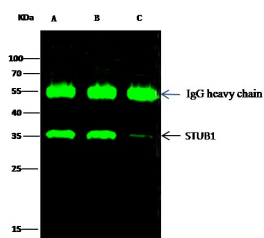
Data



Flow cytometric analysis of Human STUB1 expression on Hela cells. The cells were stained with purified anti-Human STUB1, then a FITC-conjugated second step antibody. The fluorescence histograms were derived from gated events with the forward and side light-scatter characteristics of intact cells.



Immunofluorescence analysis of STUB1 in MCF7 cells. Cells were fixed with 4% PFA, permeabilized with 0.1% Triton X-100 in PBS, blocked with 10% serum, and incubated with rabbit anti-human STUB1 Monoclonal Antibody (dilution ratio 1:300) at 4°C overnight. Then cells were stained with the Alexa Fluor®488-conjugated Goat Anti-rabbit IgG secondary antibody (green). Positive staining was localized to Cytoplasm and Nucleus.



For Research Use Only

Toll-free: 1-888-852-8623
Web: www.elabscience.com

Tel: 1-832-243-6086
Email: techsupport@elabscience.com

Fax: 1-832-243-6017

Rev. V1.2

Immunoprecipitation analysis using 2 µL anti-STUB1 Monoclonal Antibody and 15 µl of 50 % Protein G agarose.

Western blot was performed from the immunoprecipitate using STUB1 Monoclonal Antibody at a dilution of 1:500.

Lane A:0.5 mg Hela Whole Cell Lysate, Lane B:0.5 mg 293T Whole Cell Lysate, Lane C:0.5 mg MCF-7 Whole Cell Lysate

Observed-MW:36 kDa

Calculated-MW:35 kDa

Western Blot with STUB1 Monoclonal Antibody at dilution of 1:500. Lane A: HELA Whole Cell Lysate, Lane B: 293T Whole Cell Lysate, Lane C: MCF7 Whole Cell Lysate, Lysates/proteins at 30 µg per lane.

Observed-MW:36 kDa

Calculated-MW:35 kDa

Preparation & Storage

Storage

This antibody can be stored at 2°C-8°C for one month without detectable loss of activity. Antibody products are stable for twelve months from date of receipt when stored at -20°C to -80°C. Preservative-Free. Avoid repeated freeze-thaw cycles.

Shipping

Ice bag

Background

This gene encodes a protein containing tetratricopeptide repeat and a U-box that functions as a ubiquitin ligase/cochaperone. The encoded protein binds to and ubiquitinates shock cognate 71 kDa protein (Hspa8) and DNA polymerase beta (Polb), among other targets. Mutations in this gene cause spinocerebellar ataxia, autosomal recessive 16. Alternative splicing results in multiple transcript variants. There is a pseudogene for this gene on chromosome 2.

For Research Use Only

Toll-free: 1-888-852-8623
Web: www.elabscience.com

Tel: 1-832-243-6086
Email: techsupport@elabscience.com

Fax: 1-832-243-6017

Rev. V1.2