

Recombinant CD34 Monoclonal Antibody

catalog number: **AN300538P**

Note: Centrifuge before opening to ensure complete recovery of vial contents.

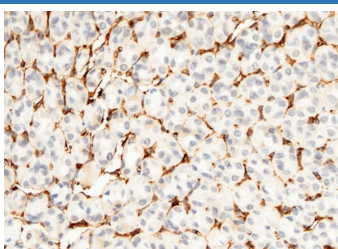
Description

Reactivity	Mouse
Immunogen	Recombinant Mouse CD34 Protein
Host	Rabbit
Isotype	IgG
Clone	3F3
Purification	Protein A
Buffer	0.2 µm filtered solution in PBS

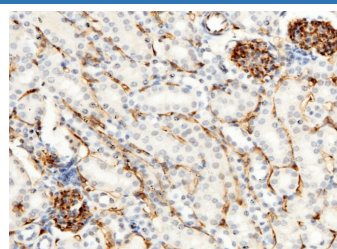
Applications Recommended Dilution

IHC-P	1:2000-1:10000
ICC/IF	1:100-1:500
FCM	1:100-1:500
IP	0.2-1 µL/mg of lysate

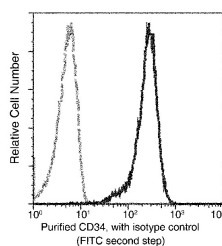
Data



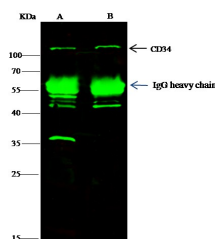
Immunohistochemistry of paraffin-embedded mouse stomach using CD34 Monoclonal Antibody at dilution of 1:5000. Positive staining was localized to vascular endothelial cells.



Immunohistochemistry of paraffin-embedded mouse kidney using CD34 Monoclonal Antibody at dilution of 1:5000. Positive staining was localized to vascular endothelial cells.



Flow cytometric analysis of CD34 expression on M1 cells. Cells were stained with purified anti-Mouse CD34, then a FITC-conjugated second step antibody. The fluorescence histograms were derived from gated events with the forward and side light-scatter characteristics of intact cells.



Immunoprecipitation analysis using 0.5 µL anti-Mouse CD34 Monoclonal Antibody and 15 µL of 50 % Protein G agarose. Western blot was performed from the immunoprecipitate using CD34 Monoclonal Antibody at a dilution of 1:350. Lane A: 0.5 mg HeLa Whole Cell Lysate, Lane B: 0.5 mg 293T Whole Cell Lysate

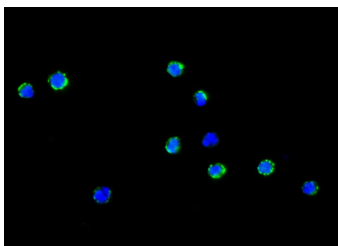
For Research Use Only

Toll-free: 1-888-852-8623
Web: www.elabscience.com

Tel: 1-832-243-6086
Email: techsupport@elabscience.com

Fax: 1-832-243-6017

Rev. V1.0



Immunofluorescence analysis of CD34 in M1 cells. Cells were fixed with 4% PFA, blocked with 10% serum, and incubated with rabbit anti-mouse CD34 monoclonal antibody (1:300) at 4°C overnight. Then cells were stained with the Alexa Fluor® 488-conjugated Goat Anti-rabbit IgG secondary antibody (green) and counterstained with DAPI (blue).

Preparation & Storage

Storage	This antibody can be stored at 2°C-8°C for one month without detectable loss of activity. Antibody products are stable for twelve months from date of receipt when stored at -20°C to -80°C. Preservative-Free. Avoid repeated freeze-thaw cycles.
Shipping	Ice bag

Background

Possible adhesion molecule with a role in early hematopoiesis by mediating the attachment of stem cells to the bone marrow extracellular matrix or directly to stromal cells. Could act as a scaffold for the attachment of lineage specific glycans, allowing stem cells to bind to lectins expressed by stromal cells or other marrow components. Presents carbohydrate ligands to selectins (By similarity).

For Research Use Only