

Recombinant Human UBE2D4 Protein (GST Tag)

Catalog Number: PKSH033309

Note: Centrifuge before opening to ensure complete recovery of vial contents.

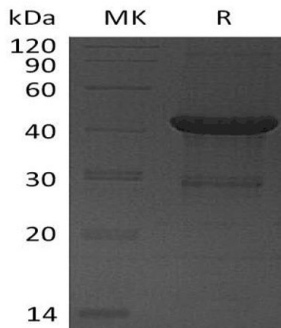
Description

Species	Human
Source	E.coli-derived Human UBE2D4 protein Met 1-Met 147, with an N-terminal GST
Calculated MW	43.5 kDa
Observed MW	40 kDa
Accession	Q9Y2X8
Bio-activity	Not validated for activity

Properties

Purity	> 95 % as determined by reducing SDS-PAGE.
Concentration	Subject to label value.
Endotoxin	< 1.0 EU per µg of the protein as determined by the LAL method.
Storage	Store at < -20°C, stable for 6 months. Please minimize freeze-thaw cycles.
Shipping	This product is provided as liquid. It is shipped at frozen temperature with blue ice/gel packs. Upon receipt, store it immediately at < -20°C.
Formulation	Supplied as a 0.2 µm filtered solution of 50mM HEPES, 150mM NaCl, 2mM DTT, 10% Glycerol, pH 7.5.

Data



> 95 % as determined by reducing SDS-PAGE.

Background

Ubiquitin-Conjugating Enzyme E2 D4 (UBE2D4) is a ligase that belongs to the Ubiquitin-Conjugating Enzyme family. UBE2D4 has been proposed to participate in Ubl conjugation pathway. UBE2D4 takes part in post-translational protein modification; protein K6-linked ubiquitination; protein K11-linked ubiquitination; protein K27-linked ubiquitination; protein K29-linked ubiquitination; protein K48-linked ubiquitination; and protein K63-linked ubiquitination. UBE2D4 regulate of protein metabolic process. UBE2D4 accepts ubiquitin from the E1 complex and catalyzes its covalent attachment to other proteins. In vitro; UBE2D4 able to promote polyubiquitination using all 7 ubiquitin Lys residues; but may prefer 'Lys-11' and 'Lys-48'-linked poly-ubiquitination.

For Research Use Only

Toll-free: 1-888-852-8623
Web: www.elabscience.com

Tel: 1-832-243-6086
Email: techsupport@elabscience.com

Fax: 1-832-243-6017