

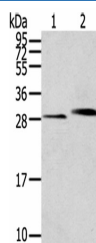
## CLIC4 Polyclonal Antibody

catalog number: E-AB-53312

**Note:** Centrifuge before opening to ensure complete recovery of vial contents.

Description	
Reactivity	Human;Mouse;Rat
Immunogen	Synthetic peptide of human CLIC4
Host	Rabbit
Isotype	IgG
Purification	Antigen affinity purification
Conjugation	Unconjugated
Buffer	Phosphate buffered solution, pH 7.4, containing 0.05% stabilizer and 50% glycerol.
Applications	Recommended Dilution
WB	1:500-1:2000

## Data



Western blot analysis of Human normal kidney tissue Human liver tissue using CLIC4 Polyclonal Antibody at dilution of 1:200

**Observed-MW:Refer to figures**

**Calculated-MW:29 kDa**

Preparation & Storage	
Storage	Store at -20°C Valid for 12 months. Avoid freeze / thaw cycles.
Shipping	The product is shipped with ice pack,upon receipt,store it immediately at the temperature recommended.

## Background

Chloride channels are a diverse group of proteins that regulate fundamental cellular processes including stabilization of cell membrane potential,transepithelial transport,maintenance of intracellular pH,and regulation of cell volume. CLIC4 is a p53- and tumor necrosis factor alpha-regulated cytoplasmic and mitochondrial protein that belongs to the CLIC family of intracellular chloride channels. CLICs have actions distinct from traditional cell membrane chloride channels,including formation of ion channels in intracellular organelles and roles in membrane trafficking,apoptosis,and cell differentiation.

## For Research Use Only