

KIAA0556 Polyclonal Antibody

catalog number: E-AB-52101

Note: Centrifuge before opening to ensure complete recovery of vial contents.

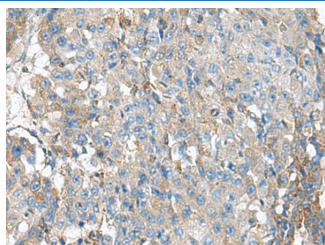
Description

Reactivity	Human;Mouse
Immunogen	Synthetic peptide of human KIAA0556
Host	Rabbit
Isotype	IgG
Purification	Antigen affinity purification
Buffer	Phosphate buffered solution, pH 7.4, containing 0.05% stabilizer and 50% glycerol.

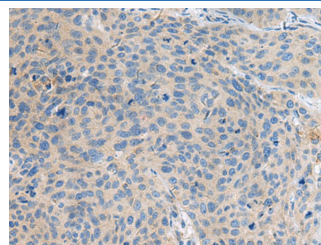
Applications Recommended Dilution

IHC	1:100-1:200
------------	-------------

Data



Immunohistochemistry of paraffin-embedded Human liver cancer tissue using KIAA0556 Polyclonal Antibody at dilution of 1:90(×200)



Immunohistochemistry of paraffin-embedded Human cervical cancer tissue using KIAA0556 Polyclonal Antibody at dilution of 1:90(×200)

Preparation & Storage

Storage	Store at -20°C Valid for 12 months. Avoid freeze / thaw cycles.
Shipping	The product is shipped with ice pack, upon receipt, store it immediately at the temperature recommended.

Background

This gene encodes a novel, evolutionarily conserved, ciliary protein. In human hTERT-RPE1 cells, the protein is found at the base of cilia, decorating the ciliary axoneme, and enriched at the ciliary tip. The protein binds to microtubules in vitro and regulates their stability when it is overexpressed. A null mutation in this gene has been associated with Joubert syndrome, a recessive disorder that is characterized by a distinctive mid-hindbrain and cerebellar malformation and is also often associated with wider ciliopathy symptoms. Consistently, in a serum-starvation ciliogenesis assay, human fibroblast cells derived from patients with the mutation display a reduced number of ciliated cells with abnormally long cilia.

For Research Use Only