

## Recombinant GCG/Glucagon Monoclonal Antibody

**catalog number: AN300359P**

**Note:** *Centrifuge before opening to ensure complete recovery of vial contents.*

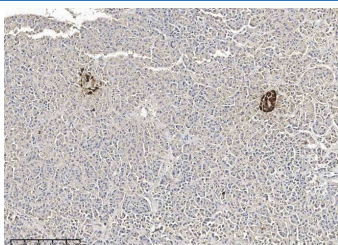
### Description

<b>Reactivity</b>	Human
<b>Immunogen</b>	A synthetic peptide corresponding to the Human GCG/Glucagon
<b>Host</b>	Rabbit
<b>Isotype</b>	IgG
<b>Clone</b>	12G6
<b>Purification</b>	Protein A
<b>Buffer</b>	0.2 µm filtered solution in PBS

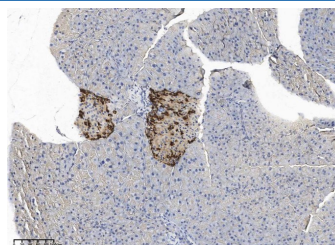
### Applications Recommended Dilution

<b>IHC-P</b>	1:100-1:500
--------------	-------------

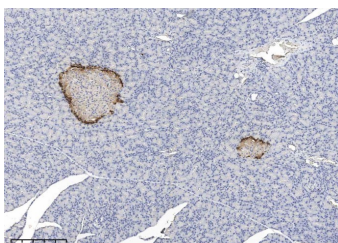
### Data



Immunohistochemistry of paraffin-embedded human pancreas using GCG/Glucagon Monoclonal Antibody at dilution of 1:200.



Immunohistochemistry of paraffin-embedded Mouse pancreas using GCG/Glucagon Monoclonal Antibody at dilution of 1:200.



Immunohistochemistry of paraffin-embedded rat pancreas using GCG/Glucagon Monoclonal Antibody at dilution of 1:200.

### Preparation & Storage

<b>Storage</b>	This antibody can be stored at 2°C-8°C for one month without detectable loss of activity. Antibody products are stable for twelve months from date of receipt when stored at -20°C to -80°C. Preservative-Free. Avoid repeated freeze-thaw cycles.
<b>Shipping</b>	Ice bag

### Background

#### For Research Use Only

The protein encoded by this gene is actually a preproprotein that is cleaved into four distinct mature peptides. One of these, glucagon, is a pancreatic hormone that counteracts the glucose-lowering action of insulin by stimulating glycogenolysis and gluconeogenesis. Glucagon is a ligand for a specific G-protein linked receptor whose signalling pathway controls cell proliferation. Two of the other peptides are secreted from gut endocrine cells and promote nutrient absorption through distinct mechanisms. Finally, the fourth peptide is similar to glicentin, an active enteroglucagon.