

## SPARCL1/SPARC-like 1 Monoclonal Antibody

catalog number: **AN200090P**

**Note:** Centrifuge before opening to ensure complete recovery of vial contents.

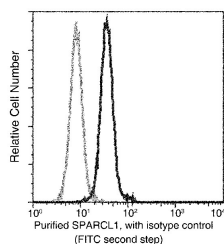
### Description

<b>Reactivity</b>	Human
<b>Immunogen</b>	Recombinant Human SPARCL1 / SPARC-like 1 protein
<b>Host</b>	Mouse
<b>Isotype</b>	IgG2b
<b>Clone</b>	A938
<b>Purification</b>	Protein A
<b>Buffer</b>	0.2 µm filtered solution in PBS

### Applications Recommended Dilution

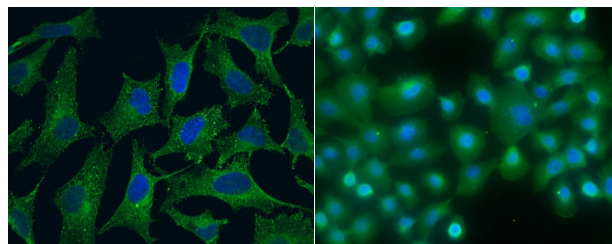
<b>ICC/IF</b>	1:20-1:100
<b>FCM</b>	1:25-1:100

### Data



Flow cytometric analysis of Human SPARCL1 expression on HL60 cells. The cells were stained with purified anti-Human SPARCL1, then a FITC-conjugated second step antibody.

The fluorescence histograms were derived from gated events with the forward and side light-scatter characteristics of intact cells.



Immunofluorescence analysis of Human SPARCL1 in A431 or HeLa cells. Cells were fixed with 4% PFA, permeabilized with 1% Triton X-100 in PBS, blocked with 10% serum, and incubated with mouse anti-Human SPARCL1 Monoclonal Antibody (1:60). Then cells were stained with the Alexa Fluor® 488-conjugated Goat Anti-mouse IgG secondary antibody (left panel, captured by laser confocal scanning microscope; right panel, captured by fluorescence microscope), countstained with DAPI for nuclear staining (blue). Positive staining was localized to cytoplasm.

### Preparation & Storage

<b>Storage</b>	This antibody can be stored at 2°C-8°C for one month without detectable loss of activity. Antibody products are stable for twelve months from date of receipt when stored at -20°C to -80°C. Preservative-Free. Avoid repeated freeze-thaw cycles.
<b>Shipping</b>	Ice bag

### Background

Predicted to enable calcium ion binding activity; collagen binding activity; and extracellular matrix binding activity. Predicted to be involved in anatomical structure development and regulation of synapse organization. Located in extracellular space.

### For Research Use Only