

Recombinant FLI1 Monoclonal Antibody

catalog number: **AN301523L**

Note: Centrifuge before opening to ensure complete recovery of vial contents.

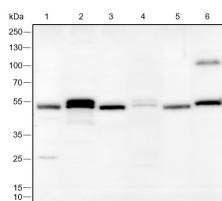
Description

Reactivity	Human;Rat;Mouse
Immunogen	Recombinant human FLI1 fragment
Host	Rabbit
Isotype	IgG, κ
Clone	A222
Purification	Protein A purified
Buffer	PBS, 50% glycerol, 0.05% Proclin 300, 0.05% protein protectant.

Applications Recommended Dilution

WB	1:500-1:1000
-----------	--------------

Data



Western Blot with FLI1 Monoclonal Antibody at dilution of 1:1000. Lane 1: K562, Lane 2: Jurkat, Lane 3: Raw264.7, Lane 4: HL-60, Lane 5: NIH-3T3, Lane 6: C6

Observed-MW:51 kDa

Calculated-MW:51 kDa

Preparation & Storage

Storage	Store at -20°C Valid for 12 months. Avoid freeze / thaw cycles.
Shipping	Ice bag

Background

FLI1 (Fli-1 Proto-Oncogene, ETS Transcription Factor) is a Protein Coding gene. Diseases associated with FLI1 include Bleeding Disorder, Platelet-Type, 21 and Isolated Delta-Storage Pool Disease. Among its related pathways are Hematopoietic Stem Cell Differentiation and Transcriptional misregulation in cancer. Gene Ontology (GO) annotations related to this gene include DNA-binding transcription factor activity and chromatin binding. An important paralog of this gene is ERG.

For Research Use Only

Toll-free: 1-888-852-8623
Web: www.elabscience.com

Tel: 1-832-243-6086
Email: techsupport@elabscience.com

Fax: 1-832-243-6017

Rev. V1.0