

Recombinant KDM4A Monoclonal Antibody

catalog number: E-AB-81576

Note: Centrifuge before opening to ensure complete recovery of vial contents.

Description

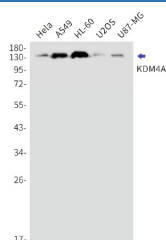
Reactivity	Human
Immunogen	A synthesized peptide derived from human KDM4A / JHDM3A / JMJD2A
Host	Rabbit
Isotype	IgG
Clone	R01-7F2
Purification	Affinity Purified
Buffer	50mM Tris-Glycine(pH 7.4), 0.15M NaCl, 40% Glycerol, 0.05% stabilizer and 0.05% protective protein.

Applications

Recommended Dilution

WB	1:500-1:2000
-----------	--------------

Data



Western blot detection of KDM4A in HeLa, A549, HL-60, U2OS, U87-MG cell lysates using KDM4A Rabbit mAb (1:1000 diluted). Observed band size: 150kDa.

Observed-MW: 150 kDa

Calculated-MW: 121 kDa

Preparation & Storage

Storage	Store at -20°C Valid for 12 months. Avoid freeze / thaw cycles.
Shipping	The product is shipped with ice pack, upon receipt, store it immediately at the temperature recommended.

Background

This gene is a member of the Jumonji domain 2 (JMJD2) family and encodes a protein containing a JmjN domain, a JmjC domain, a JD2H domain, two TUDOR domains, and two PHD-type zinc fingers. This nuclear protein functions as a trimethylation-specific demethylase, converting specific trimethylated histone residues to the dimethylated form, and as a transcriptional repressor.

For Research Use Only