

Recombinant Human Cathepsin L/CTSL Protein (His Tag)



Catalog Number:PKSH032182

Note: Centrifuge before opening to ensure complete recovery of vial contents.

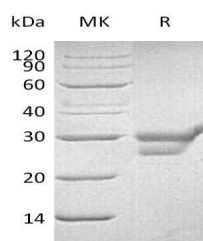
Description

Synonyms	Cathepsin L1;Major Excreted Protein;MEP;CTSL1;CTSL
Species	Human
Expression Host	HEK293 Cells
Sequence	Thr18-Val333
Accession	AAH12612
Calculated Molecular Weight	36.9 kDa
Observed molecular weight	34 kDa
Tag	C-His

Properties

Purity	> 95 % as determined by reducing SDS-PAGE.
Endotoxin	< 1.0 EU per µg of the protein as determined by the LAL method.
Storage	Store at < -20°C, stable for 6 months. Please minimize freeze-thaw cycles.
Shipping	This product is provided as liquid. It is shipped at frozen temperature with blue ice/gel packs. Upon receipt, store it immediately at < - 20°C.
Formulation	Supplied as a 0.2 µm filtered solution of 20mM HAc-NaAc, 150mM NaCl, pH 4.5.
Reconstitution	Not Applicable

Data



> 95 % as determined by reducing SDS-PAGE.

Background

Cathepsin L is an enzyme. Cathepsin L, a lysosomal endopeptidase expressed in most eukaryotic cells, is a member of the papain-like family of cysteine proteinases. Cathepsin L plays a major role in antigen processing, tumor invasion and metastasis, bone resorption, and turnover of intracellular and secreted proteins involved in growth regulation. Unlike the precursor forms of other papain family members, the 43 kDa pro-cathepsin L itself is secreted from various cells. Pro-cathepsin L is the major excreted protein of malignantly transformed mouse fibroblasts and is also one of the major acidic cysteine proteases in mammalian cells.

For Research Use Only

A Reliable Research Partner in Life Science and Medicine

Toll-free: 1-888-852-8623

Web: www.elabscience.com

Tel: 1-832-243-6086

Email: techsupport@elabscience.com

Fax: 1-832-243-6017