

## LILRA2 Polyclonal Antibody

catalog number: **E-AB-18728**

**Note:** Centrifuge before opening to ensure complete recovery of vial contents.

### Description

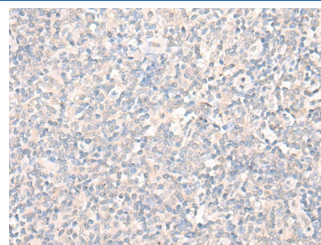
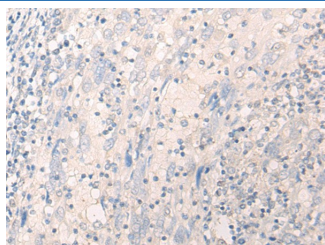
<b>Reactivity</b>	Human
<b>Immunogen</b>	Fusion protein of human LILRA2
<b>Host</b>	Rabbit
<b>Isotype</b>	IgG
<b>Purification</b>	Antigen affinity purification
<b>Buffer</b>	Phosphate buffered solution, pH 7.4, containing 0.05% stabilizer and 50% glycerol.

### Applications

### Recommended Dilution

<b>IHC</b>	1:30-1:150
------------	------------

### Data



Immunohistochemistry of paraffin-embedded Human cervical cancer tissue using LILRA2 Polyclonal Antibody at dilution of 1:40( $\times 200$ )

Immunohistochemistry of paraffin-embedded Human tonsil tissue using LILRA2 Polyclonal Antibody at dilution of 1:40( $\times 200$ )

### Preparation & Storage

<b>Storage</b>	Store at $-20^{\circ}\text{C}$ Valid for 12 months. Avoid freeze / thaw cycles.
<b>Shipping</b>	The product is shipped with ice pack, upon receipt, store it immediately at the temperature recommended.

### Background

This gene encodes a member of a family of immunoreceptors that are expressed predominantly on monocytes and B cells, and at lower levels on dendritic cells and natural killer cells. The encoded protein is an activating receptor that inhibits dendritic cell differentiation and antigen presentation and suppresses innate immune response. Alternatively spliced transcript variants encoding different isoforms have been found. This gene is located in a cluster of related genes on chromosome 19 and there is a pseudogene for this gene on chromosome 3.

### For Research Use Only