

AMZ1 Polyclonal Antibody

catalog number: E-AB-16176

Note: Centrifuge before opening to ensure complete recovery of vial contents.

Description

Reactivity	Human
Immunogen	Synthetic peptide of human AMZ1
Host	Rabbit
Isotype	IgG
Purification	Affinity purification
Buffer	Phosphate buffered solution, pH 7.4, containing 0.05% stabilizer and 50% glycerol.

Applications

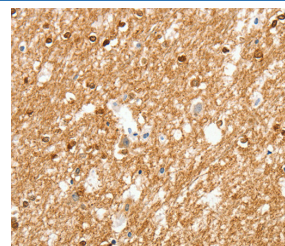
Applications	Recommended Dilution
WB	1:500-1:2000
IHC	1:50-1:200

Data



Western Blot analysis of Human fetal brain and liver tissue using AMZ1 Polyclonal Antibody at dilution of 1:1000

Calculated-MW:55 kDa



Immunohistochemistry of paraffin-embedded Human brain using AMZ1 Polyclonal Antibody at dilution of 1:80

Preparation & Storage

Storage	Store at -20°C Valid for 12 months. Avoid freeze / thaw cycles.
Shipping	The product is shipped with ice pack, upon receipt, store it immediately at the temperature recommended.

Background

AMZ1 shares sequence similarity with archaeal metalloproteases called archaemetzincins, but it appears to act predominantly as a basic aminopeptidase. Inhibited by the general metalloprotease inhibitors o-phenanthroline and batimastat. Also significantly inhibited by amastatin, which is an inhibitor of aminopeptidases. Not inhibited by 4-(2-aminoethyl)-benzenesulfonyl fluoride, E-64, and TIMPS (tissue inhibitors of metalloproteinases), which are inhibitors of serine, cysteine, and matrix metalloproteases, respectively.

For Research Use Only