

## Recombinant beta Catenin Monoclonal Antibody

catalog number: **E-AB-81445**

**Note:** Centrifuge before opening to ensure complete recovery of vial contents.

### Description

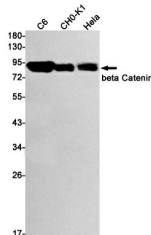
<b>Reactivity</b>	Human;Mouse;Rat;Hamster
<b>Immunogen</b>	A synthetic peptide of human beta Catenin
<b>Host</b>	Rabbit
<b>Isotype</b>	IgG
<b>Clone</b>	R06-1E2
<b>Purification</b>	Affinity Purified
<b>Buffer</b>	50mM Tris-Glycine(pH 7.4), 0.15M NaCl, 40% Glycerol, 0.05% stabilizer and 0.05% protective protein.

### Applications

### Recommended Dilution

<b>WB</b>	1:1000-1:2000
<b>IHC</b>	1:50-1:100

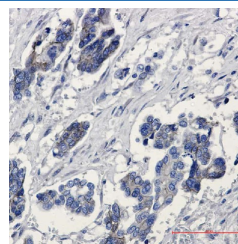
### Data



Western blot detection of beta Catenin in C6,CHO-K1,Hela cell lysates using beta Catenin Rabbit mAb(1:1000 diluted).Predicted band size:86kDa.Observed band size:86kDa.

**Observed-MW:86 kDa**

**Calculated-MW:86 kDa**



Immunohistochemistry of beta Catenin in paraffin-embedded Human Cholangiocarcinoma using beta Catenin Rabbit mAb at dilution 1:50

### Preparation & Storage

<b>Storage</b>	Store at -20°C Valid for 12 months. Avoid freeze / thaw cycles.
<b>Shipping</b>	The product is shipped with ice pack,upon receipt,store it immediately at the temperature recommended.

### Background

CTNNB1,also known as  $\beta$ -Catenin,is an evolutionarily conserved,multifunctional intracellular protein. CTNNB1 was originally identified in cell adherens junctions (AJs) where it functions to bridge the cytoplasmic domain of cadherins to  $\alpha$ -catenin and the actin cytoskeleton. Besides its essential role in the AJs,CTNNB1 is also a key downstream component of the canonical Wnt pathway that plays diverse and critical roles in embryonic development and adult tissue homeostasis. Deregulation of CTNNB1 activity is associated with multiple diseases including cancers. .

### For Research Use Only