

# Recombinant Human LRRC3B Protein (His Tag)

Catalog Number:PKSH032692



**Note:** Centrifuge before opening to ensure complete recovery of vial contents.

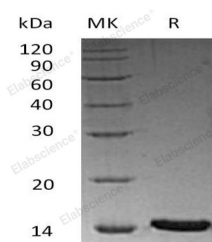
## Description

<b>Synonyms</b>	Leucine-Rich Repeat-Containing Protein 3B;Leucine-Rich Repeat Protein LRP15;LRRC3B;LRP15
<b>Species</b>	Human
<b>Expression Host</b>	HEK293 Cells
<b>Sequence</b>	Cys34-Tyr204
<b>Accession</b>	Q96PB8
<b>Calculated Molecular Weight</b>	20.0 kDa
<b>Observed molecular weight</b>	52 kDa
<b>Tag</b>	C-His

## Properties

<b>Purity</b>	> 95 % as determined by reducing SDS-PAGE.
<b>Endotoxin</b>	< 1.0 EU per µg of the protein as determined by the LAL method.
<b>Storage</b>	Generally, lyophilized proteins are stable for up to 12 months when stored at -20 to -80°C. Reconstituted protein solution can be stored at 4-8°C for 2-7 days. Aliquots of reconstituted samples are stable at < -20°C for 3 months.
<b>Shipping</b>	This product is provided as lyophilized powder which is shipped with ice packs.
<b>Formulation</b>	Lyophilized from a 0.2 µm filtered solution of 20mM Tris-HCl, 150mM NaCl, pH 8.0. Normally 5 % - 8 % trehalose, mannitol and 0.01% Tween80 are added as protectants before lyophilization. Please refer to the specific buffer information in the print
<b>Reconstitution</b>	Please refer to the printed manual for detailed information.

## Data



> 95 % as determined by reducing SDS-PAGE.

## Background

Leucine-Rich Repeat-Containing Protein 3B (LRRC3B) belongs to the LRRC3 family. LRRC3B is single-pass membrane protein and contains three leucine-rich repeats, one LRRCT domain, and one LRRNT domain. LRR-containing proteins, of which there are greater than 2,000, participate in many important processes, including plant and animal immunity, hormone-receptor interactions, cell adhesion, signal transduction, regulation of gene expression, and apoptosis. A number of microarray expression profiling studies on human cancers have shown that LRRC3B is down-regulated in gastric, breast, colon, testis, prostate and brain cancers, suggesting LRRC3B involvement in carcinogenesis

## For Research Use Only

A Reliable Research Partner in Life Science and Medicine

Toll-free: 1-888-852-8623

Web: [www.elabscience.com](http://www.elabscience.com)

Tel: 1-832-243-6086

Email: [techsupport@elabscience.com](mailto:techsupport@elabscience.com)

Fax: 1-832-243-6017