

## MRM1 Polyclonal Antibody

catalog number: **E-AB-18780**

**Note:** Centrifuge before opening to ensure complete recovery of vial contents.

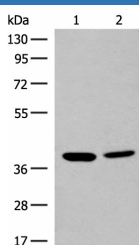
### Description

<b>Reactivity</b>	Human
<b>Immunogen</b>	Fusion protein of human MRM1
<b>Host</b>	Rabbit
<b>Isotype</b>	IgG
<b>Purification</b>	Antigen affinity purification
<b>Buffer</b>	Phosphate buffered solution, pH 7.4, containing 0.05% stabilizer and 50% glycerol.

### Applications Recommended Dilution

<b>WB</b>	1:500-1:2000
-----------	--------------

### Data



Western blot analysis of K562 and HEPG2 cell lysates using  
MRM1 Polyclonal Antibody at dilution of 1:400

**Observed-MW:Refer to figures**

**Calculated-MW:39 kDa**

### Preparation & Storage

<b>Storage</b>	Store at -20°C Valid for 12 months. Avoid freeze / thaw cycles.
<b>Shipping</b>	The product is shipped with ice pack, upon receipt, store it immediately at the temperature recommended.

### Background

Probably methylates the ribose of guanosine G-2270 in the peptidyl transferase center of the mitochondrial large ribosomal RNA (21S).

### For Research Use Only