

Recombinant Human RNASET2 Protein (Human Cells, His Tag)

Catalog Number: PKSH033539

Note: Centrifuge before opening to ensure complete recovery of vial contents.

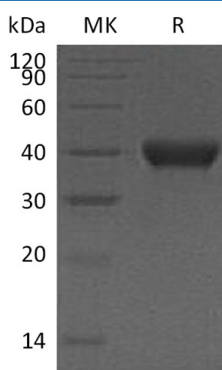
Description

Species	Human
Source	HEK293 Cells-derived Human RNASET2 protein Asp25-His256, with an C-terminal His
Calculated MW	28.2 kDa
Observed MW	38-45 kDa
Accession	O00584
Bio-activity	Not validated for activity

Properties

Purity	> 95 % as determined by reducing SDS-PAGE.
Concentration	Subject to label value.
Endotoxin	< 1.0 EU per µg of the protein as determined by the LAL method.
Storage	Store at < -20°C, stable for 6 months. Please minimize freeze-thaw cycles.
Shipping	This product is provided as liquid. It is shipped at frozen temperature with blue ice/gel packs. Upon receipt, store it immediately at < -20°C.
Formulation	Supplied as a 0.2 µm filtered solution of 20mM Tris-HCl, 150mM NaCl, 20% Glycerol, pH 7.5.

Data



> 95 % as determined by reducing SDS-PAGE.

Background

RNASET2 (ribonuclease T2) is an enzyme which belongs to the RNase T2 family. It is highly expressed in the temporal lobe and fetal brain. RNASET2 gene is a novel member of the Rh/T2/S-glycoprotein class of extracellular ribonucleases. This protein can be inhibited by Zn²⁺ and Cu²⁺. It has ribonuclease activity, with higher activity at acidic pH and is probably involved in lysosomal degradation of ribosomal RNA. Defects in RNASET2 are the cause of leukoencephalopathy cystic without megalencephaly. An infantile-onset syndrome of cerebral leukoencephalopathy. Affected newborns develop microcephaly and neurologic abnormalities including psychomotor impairment, seizures and sensorineural hearing impairment. The brain shows multifocal white matter lesions, anterior temporal lobe subcortical cysts, pericystic abnormal myelination, ventriculomegaly and intracranial calcifications.

For Research Use Only

Toll-free: 1-888-852-8623
Web: www.elabscience.com

Tel: 1-832-243-6086
Email: techsupport@elabscience.com

Fax: 1-832-243-6017