

Recombinant Human vWF Protein (His Tag)

Catalog Number: PKSH031331

Note: Centrifuge before opening to ensure complete recovery of vial contents.

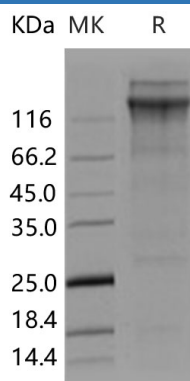
Description

Species	Human
Source	CHO Stable Cells-derived Human vWF protein Met 1-Lys 2813, with an C-terminal His
Calculated MW	308.0 kDa
Observed MW	260&350 kDa
Accession	NP_000543.2
Bio-activity	Not validated for activity

Properties

Purity	> 75 % as determined by reducing SDS-PAGE.
Endotoxin	< 1.0 EU per µg of the protein as determined by the LAL method.
Storage	Generally, lyophilized proteins are stable for up to 12 months when stored at -20 to -80 °C. Reconstituted protein solution can be stored at 4-8°C for 2-7 days. Aliquots of reconstituted samples are stable at < -20°C for 3 months.
Shipping	This product is provided as lyophilized powder which is shipped with ice packs.
Formulation	Lyophilized from sterile PBS, pH 7.4 Normally 5% - 8% trehalose, mannitol and 0.01% Tween 80 are added as protectants before lyophilization. Please refer to the specific buffer information in the printed manual.
Reconstitution	Please refer to the printed manual for detailed information.

Data



> 75 % as determined by reducing SDS-PAGE.

Background

Von Willebrand Factor (VWF) is a multimeric glycoprotein involved in hemostasis in blood, binds receptors on the surface of platelets and in connective tissue, thereby mediating the adhesion of platelets to sites of vascular injury. From studies it appears that VWF protein uncoils under these circumstances, decelerating passing platelets. VWF protein is deficient or defective in von Willebrand disease (VWD) and is involved in a large number of other diseases, including thrombosis, thrombotic thrombocytopenic purpura, Stroke, Heyde's syndrome, possibly hemolytic-uremic syndrome and so on.

For Research Use Only

Toll-free: 1-888-852-8623
Web: www.elabscience.com

Tel: 1-832-243-6086
Email: techsupport@elabscience.com

Fax: 1-832-243-6017