

## Recombinant LIMK1 Monoclonal Antibody

catalog number: **AN302042L**

**Note:** Centrifuge before opening to ensure complete recovery of vial contents.

### Description

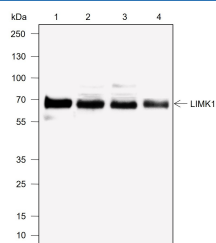
<b>Reactivity</b>	Human;
<b>Immunogen</b>	Peptide. This information is proprietary to PTMab.
<b>Host</b>	Rabbit
<b>Isotype</b>	IgG, $\kappa$
<b>Clone</b>	A762
<b>Purification</b>	Protein A purified
<b>Buffer</b>	PBS, 50% glycerol, 0.05% Proclin 300, 0.05% protein protectant.

### Applications

### Recommended Dilution

<b>WB</b>	1:2000
-----------	--------

### Data



Western Blot with LIMK1 Monoclonal Antibody at dilution of 1:2000. Lane 1: U-87 MG, Lane 2: K562, Lane 3: SK-N-BE(2), Lane 4: Ramos

**Observed-MW:70 kDa**

**Calculated-MW:73 kDa**

### Preparation & Storage

<b>Storage</b>	Store at -20°C Valid for 12 months. Avoid freeze / thaw cycles.
<b>Shipping</b>	Ice bag

### Background

LIM kinases (LIMK1 and LIMK2) are serine/threonine kinases that have two zinc finger motifs, known as LIM motifs, in their amino-terminal regulatory domains. LIM kinases are involved in actin cytoskeletal regulation downstream of Rho-family GTPases, PAKs, and ROCK. PAK1 and ROCK phosphorylate LIMK1 or LIMK2 at the conserved Thr508 or Thr505 residues in the activation loop, increasing LIMK activity. Activated LIM kinases inhibit the actin depolymerization activity of cofilin by phosphorylation at the amino-terminal Ser3 residue of cofilin.

### For Research Use Only

Toll-free: 1-888-852-8623  
Web: [www.elabscience.com](http://www.elabscience.com)

Tel: 1-832-243-6086  
Email: [techsupport@elabscience.com](mailto:techsupport@elabscience.com)

Fax: 1-832-243-6017

Rev. V1.0