

PAX5 Polyclonal Antibody

catalog number: E-AB-19303

Note: Centrifuge before opening to ensure complete recovery of vial contents.

Description

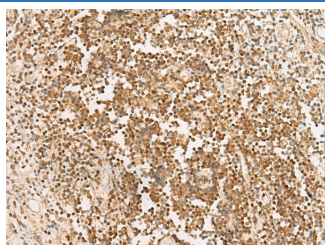
Reactivity	Human;Mouse
Immunogen	Synthetic peptide of human PAX5
Host	Rabbit
Isotype	IgG
Purification	Antigen affinity purification
Conjugation	Unconjugated
buffer	Phosphate buffered solution, pH 7.4, containing 0.05% stabilizer and 50% glycerol.

Applications

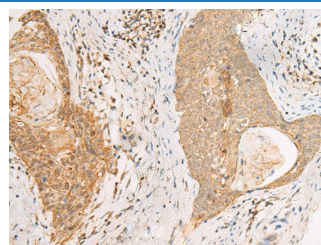
Recommended Dilution

IHC	1:30-1:150
------------	------------

Data



Immunohistochemistry of paraffin-embedded Human prostate cancer tissue using PAX5 Polyclonal Antibody at dilution of 1:30 (x200)



Immunohistochemistry of paraffin-embedded Human esophagus cancer tissue using PAX5 Polyclonal Antibody at dilution of 1:30 (x200)

Preparation & Storage

Storage	Store at -20°C Valid for 12 months. Avoid freeze / thaw cycles.
Shipping	The product is shipped with ice pack, upon receipt, store it immediately at the temperature recommended.

Background

PAX5, also named B-cell specific activator protein (BSAP), is a member of the highly conserved paired box (PAX)-domain family of transcription factors. PAX5 is essential in normal B-cell lymphopoiesis. It is expressed in pro-B, pre-B and mature B lymphocytes but not in plasma cells. PAX5 is a common target in leukemogenesis of B-ALL (B-lineage acute lymphoblastic leukemia) along with CDKN2A. Owing to its frequent deletion in B-ALL, PAX5 could be used as one of the molecular markers in diagnosis and monitoring of the disease. This antibody is specific to PAX5. It will not cross react with other PAX members.

For Research Use Only