

GAPDH Monoclonal Antibody

catalog number: AN005280L

Note: Centrifuge before opening to ensure complete recovery of vial contents.

Description

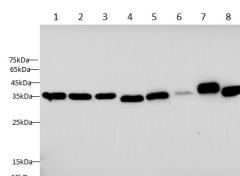
Reactivity	Human;Mouse;Rat
Immunogen	Recombinant human GAPDH protein expressed by E.coli
Host	Mouse
Isotype	IgM
Clone	7B8
Purification	Protein A/G Purification
Conjugation	Unconjugated
Buffer	PBS with 0.05% Proclin300, 1% protective protein and 50% glycerol, pH7.4

Applications

Recommended Dilution

WB	1:2000-1:4000
IHC	1:200-1:400

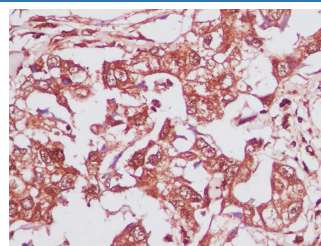
Data



Western blot with Anti GAPDH Monoclonal Antibody at dilution of 1:3000. Lane 1: HeLa cell lysate, Lane 2: MCF-7 cell lysate, Lane 3: Hep G2 cell lysate, Lane 4: Raw264.7 cell lysate, Lane 5: Mouse brain tissue lysate, Lane 6: Rat lung tissue lysate, Lane 7: Rat brain lysate, Lane 8: C6 cell lysate.

Observed-MW:36 kDa

Calculated-MW:36 kDa



Immunohistochemistry of paraffin-embedded Human breast cancer using GAPDH Monoclonal Antibody at dilution of 1:600.

Preparation & Storage

Storage	Store at -20°C Valid for 12 months. Avoid freeze / thaw cycles.
Shipping	The product is shipped with ice pack, upon receipt, store it immediately at the temperature recommended.

Background

GAPDH is an enzyme of 37kDa that catalyzes the sixth step of glycolysis and thus serves to break down glucose for energy and carbon molecules. Because the GAPDH gene is often stably and constitutively expressed at high levels in most tissues and cells, it is commonly used as a loading control for western blot and as a control for qPCR.