

## (KO Validated) IFITM3 Polyclonal Antibody

**catalog number: E-AB-64439**

**Note:** Centrifuge before opening to ensure complete recovery of vial contents.

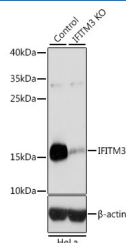
### Description

<b>Reactivity</b>	Human;Mouse;Rat
<b>Immunogen</b>	Recombinant fusion protein of human IFITM3 (NP_066362.2).
<b>Host</b>	Rabbit
<b>Isotype</b>	IgG
<b>Purification</b>	Affinity purification
<b>Buffer</b>	Phosphate buffered solution, pH 7.4, containing 0.05% stabilizer and 50% glycerol.

### Applications

<b>WB</b>	1:500-1:2000
<b>IF</b>	1:50-1:100

### Data

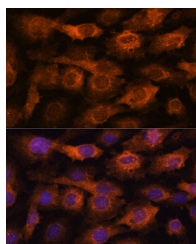


Western blot analysis of extracts from normal (control) and IFITM3 knockout (KO) HeLa cells using IFITM3 Polyclonal

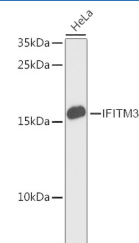
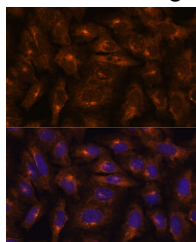
Antibody at dilution of 1:3000.

**Observed-MW:15 kDa**

**Calculated-MW:14 kDa**



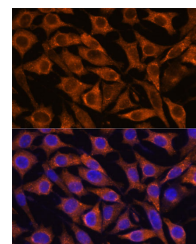
Immunofluorescence analysis of C6 cells using IFITM3 Polyclonal Antibody at dilution of 1:100. Blue: DAPI for nuclear staining.



Western blot analysis of extracts of HeLa cells using IFITM3 Polyclonal Antibody at dilution of 1:3000.

**Observed-MW:15 kDa**

**Calculated-MW:14 kDa**



Immunofluorescence analysis of L929 cells using IFITM3 Polyclonal Antibody at dilution of 1:100. Blue: DAPI for nuclear staining.

### For Research Use Only

Immunofluorescence analysis of U-2 OS cells using IFITM3

Polyclonal Antibody at dilution of 1:100. Blue: DAPI for  
nuclear staining.

## Preparation & Storage

**Storage**

Store at -20°C Valid for 12 months. Avoid freeze / thaw cycles.

**Shipping**

The product is shipped with ice pack, upon receipt, store it immediately at the temperature recommended.

## Background

The protein encoded by this gene is an interferon-induced membrane protein that helps confer immunity to influenza A H1N1 virus, West Nile virus, and dengue virus. Two transcript variants, only one of them protein-coding, have been found for this gene. Another variant encoding an N-terminally truncated isoform has been reported, but the full-length nature of this variant has not been determined.

## For Research Use Only