

S100A1 Polyclonal Antibody

Catalog Number: E-AB-32841

1 Publications



Note: Centrifuge before opening to ensure complete recovery of vial contents.

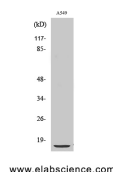
Description

| | |
|---------------------|--|
| Reactivity | Human, Mouse, Rat |
| Immunogen | Synthesized peptide derived from the N-terminal region of human S-100 α |
| Host | Rabbit |
| Isotype | IgG |
| Purification | Affinity purification |
| Conjugation | Unconjugated |
| Formulation | PBS with 0.02% sodium azide, 0.5% protective protein and 50% glycerol, pH7.4 |

Applications Recommended Dilution

| | |
|--------------|--------------|
| WB | 1:500-1:2000 |
| IHC | 1:100-1:300 |
| IF | 1:200-1:1000 |
| ELISA | 1:20000 |

Data



Western Blot analysis of A549 cells with S100A1
Polyclonal Antibody
Observed Mw: 10kDa
Calculated Mw: 11kDa

Preparation & Storage

Storage Store at -20°C. Avoid freeze / thaw cycles.

Background

The protein encoded by this gene is a member of the S100 family of proteins containing 2 EF-hand calcium-binding motifs. S100 proteins are localized in the cytoplasm and/or nucleus of a wide range of cells, and involved in the regulation of a number of cellular processes such as cell cycle progression and differentiation. S100 genes include at least 13 members which are located as a cluster on chromosome 1q21. This protein may function in stimulation of Ca²⁺-induced Ca²⁺ release, inhibition of microtubule assembly, and inhibition of protein kinase C-mediated phosphorylation. Reduced expression of this protein has been implicated in cardiomyopathies.

For Research Use Only

A Reliable Research Partner in Life Science and Medicine

Toll-free: 1-888-852-8623

Web: www.elabscience.com

Tel: 1-832-243-6086

Email: techsupport@elabscience.com

Fax: 1-832-243-6017