

Recombinant Human KRT18 Protein (His Tag)

Catalog Number: PDEH100681

Note: Centrifuge before opening to ensure complete recovery of vial contents.

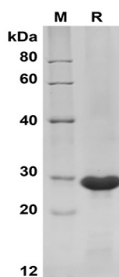
Description

Species	Human
Source	E.coli-derived Human KRT18 protein Pro239-Asp397, with an N-terminal His
Calculated MW	18.1 kDa
Observed MW	28 kDa
Accession	P05783-1
Bio-activity	Not validated for activity

Properties

Purity	> 95% as determined by reducing SDS-PAGE.
Endotoxin	< 10 EU/mg of the protein as determined by the LAL method
Storage	Generally, lyophilized proteins are stable for up to 12 months when stored at -20 to -80 °C. Reconstituted protein solution can be stored at 4-8°C for 2-7 days. Aliquots of reconstituted samples are stable at < -20°C for 3 months.
Shipping	This product is provided as lyophilized powder which is shipped with ice packs.
Formulation	Lyophilized from a 0.2 µm filtered solution in PBS with 5% Trehalose and 5% Mannitol.
Reconstitution	It is recommended that sterile water be added to the vial to prepare a stock solution of 0.5 mg/mL. Concentration is measured by UV-Vis.

Data



SDS-PAGE analysis of Human KRT18 proteins, 2µg/lane of Recombinant Human KRT18 proteins was resolved with SDS-PAGE under reducing conditions, showing bands at 28 KD.

Background

Cytokeratin 18 (CK18) has a molecular weight of 45 KDa, which is a low molecular weight type A cytokeratin. It is a marker of simple epithelium, including glandular epithelium. The stratified squamous epithelium is generally negative. CK18 is mainly used in the diagnosis of adenocarcinoma.