

Recombinant Human LYPLA1 Protein (His Tag)

Catalog Number: PKSH032043

Note: Centrifuge before opening to ensure complete recovery of vial contents.

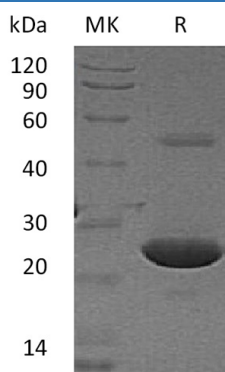
Description

Species	Human
Source	E.coli-derived Human LYPLA1 protein Met 1-Asp230, with an N-terminal His
Calculated MW	26.8 kDa
Observed MW	25 kDa
Accession	O75608
Bio-activity	Not validated for activity

Properties

Purity	> 95 % as determined by reducing SDS-PAGE.
Concentration	Subject to label value.
Endotoxin	< 1.0 EU per µg of the protein as determined by the LAL method.
Storage	Store at < -20°C, stable for 6 months. Please minimize freeze-thaw cycles.
Shipping	This product is provided as liquid. It is shipped at frozen temperature with blue ice/gel packs. Upon receipt, store it immediately at < -20°C.
Formulation	Supplied as a 0.2 µm filtered solution of 20mM Tris-HCl, 100mM NaCl, 1mM DTT, 10% Glycerol, pH 8.0.

Data



> 95 % as determined by reducing SDS-PAGE.

Background

Acyl-Protein Thioesterase 1 (APT-1) is lysophospholipase that belongs to the AB hydrolase 2 family. Lysophospholipases are enzymes that act on biological membranes to regulate the multifunctional lysophospholipids. APT-1 performs on biological membranes to regulate the multifunctional lysophospholipids. It hydrolyzes lysophosphatidylcholine in both monomeric and micellar forms. It hydrolyzes fatty acids from S-acylated cysteine residues in proteins such as trimeric Gα proteins or HRAS; in addition, it also has depalmitoylating activity and low lysophospholipase activity.