

## Succinylated Lysine Polyclonal Antibody

catalog number: E-AB-40542

**Note:** Centrifuge before opening to ensure complete recovery of vial contents.

### Description

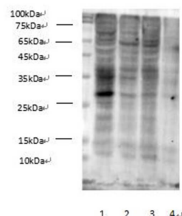
<b>Reactivity</b>	Human
<b>Immunogen</b>	Succinylated BSA
<b>Host</b>	Rabbit
<b>Isotype</b>	IgG
<b>Purification</b>	Antigen Affinity Purification
<b>Conjugation</b>	Unconjugated
<b>Buffer</b>	PBS with 0.05% proclin 300, 1% protective protein and 50% glycerol,pH7.4

### Applications

### Recommended Dilution

<b>WB</b>	1:1000-2000
-----------	-------------

### Data



Western Blot analysis of Succinylated Lysine in various cell lines at dilution of 1:1000. Lane 1 HEK-293, Lane 2 MCF7, Lane 3 HepG2, Lane 4 Hela cell lysates.

### Preparation & Storage

<b>Storage</b>	Store at -20°C Valid for 12 months. Avoid freeze / thaw cycles.
<b>Shipping</b>	The product is shipped with ice pack,upon receipt,store it immediately at the temperature recommended.

### Background

Succinylation is a posttranslational modification where a succinyl group (-CO-CH<sub>2</sub>-CH<sub>2</sub>-CO<sub>2</sub>H) is added to a lysine residue of a protein molecule. This modification is found in many proteins, including histones. The potential role of succinylation is under i